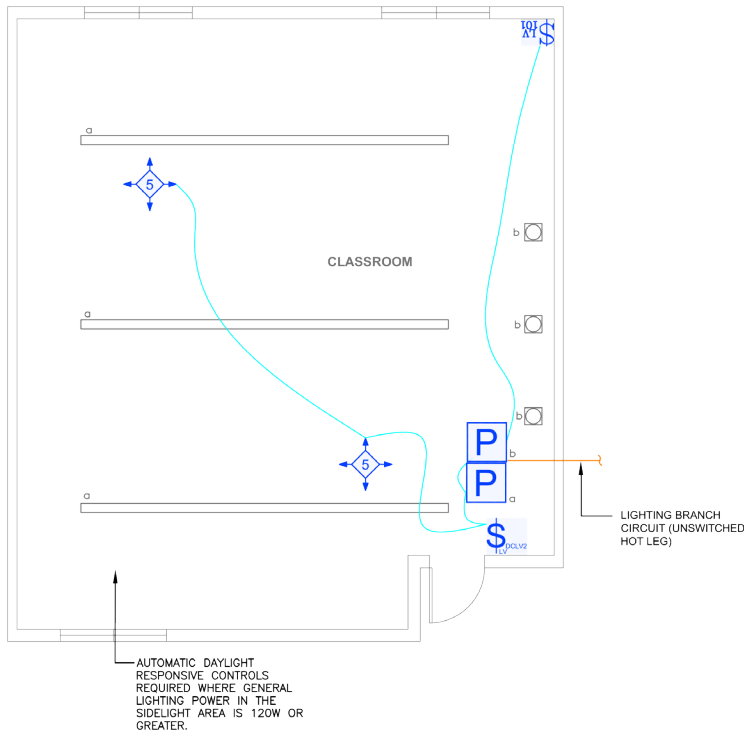


CA Title 24 (2016) Compliant Space $\geq 100\text{Ft}^2$, Bldg $< 10,000\text{Ft}^2$, Dimming with Analog Product



SEQUENCE OF OPERATION

1. Manual On/Off and multi-level control of general lighting (a) with wall switch.
2. Manual control On/Off white board lighting (b) with wall switch.
3. Auto off all lighting within 20 minutes of occupants leaving.

DESIGN CONSIDERATIONS

- When lighting power in the primary sidelight area is 120 W or greater, it must have automatic daylight responsive controls installed for all general lighting in that area.
- Although not required by code (Title 24 130.5(d)), automatic receptacle can be designed with either an RF transmitter with receptacle RF receivers, or can be hardwired to receptacles using a receptacle rated Power Pack.
- Time scheduling, demand response and remote programming/ diagnostic functions are available using Wattstopper Digital Lighting Management networked products.
- To integrate occupancy detection control with the HVAC system, use a DT-300 occupancy sensor with isolated relay.

BILL OF MATERIALS

BZ-150 (2)	Power Pack
DT-305 (2)	Ceiling Mount Dual Tech Occupancy Sensor
DCLV2 (1)	Low Voltage, 0-10V Dimming Wall Switch
LVSW-101 (1)	1-Button Wall Switch

CODE REQUIREMENTS

130.1(a)1-3	Area Controls
130.1(a)4	Separately Controlled Lighting
130.1(b)	Multi-Level Controls and Uniformity
130.1(c)5	Occupancy Sensor Shut-Off Controls