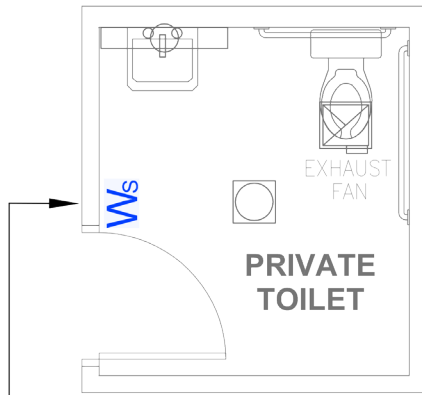


**CA Title 24 (2016) Compliant** Space <100Ft², Bldg <10,000Ft², On/Off Switching with Line Voltage Wallbox Product



OCCUPANCY WALL SWITCH TO CONTROL LIGHTS AND EXHAUST FAN ON/OFF.

**SEQUENCE OF OPERATION**

1. Lighting and fan are manually controlled On/Off with occupancy sensor switch.
2. Lighting and fan will auto Off within 15 minutes of occupants leaving.

**DESIGN CONSIDERATIONS**

- Demand Response, time scheduling and remote programming functions may be enabled by using DLM product with LMBC-300 Network Bridge connectivity for this space.

**BILL OF MATERIALS**

WS-301 (1)	Wallbox PIR Occupancy Sensor
------------	------------------------------

**CODE REQUIREMENTS**

130.1(a)1-3	Area Controls
130.1(b)	Multi-Level Controls and Uniformity
130.1(c)5	Occupancy Sensor Shut-Off Controls