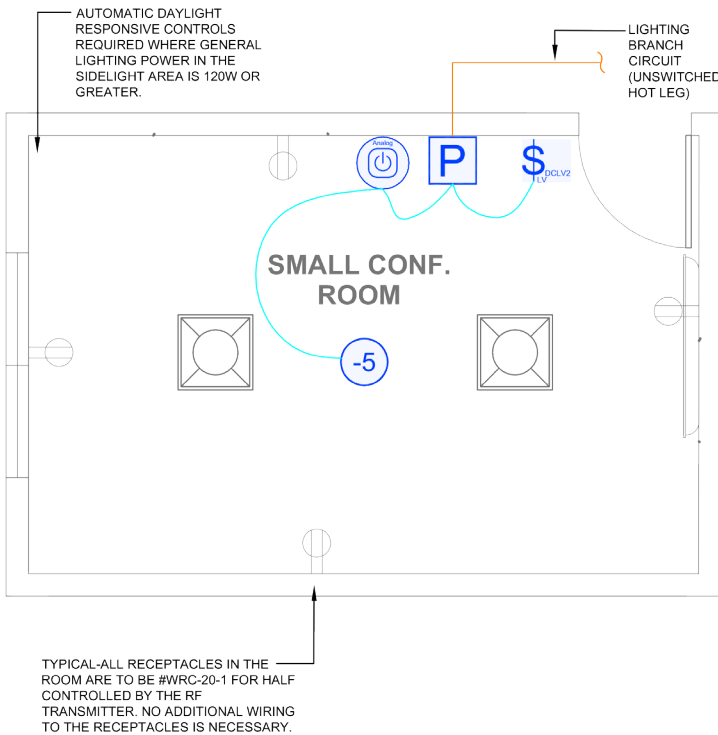


CA Title 24 (2016) Compliant Space >100Ft², Bldg <10,000Ft², Dimming with Analog Product



SEQUENCE OF OPERATION

1. Lighting auto On to 50% illumination and controlled receptacles auto On when occupancy detected.
2. Manual On/Off/Dim control of lighting with wall switch.
3. Auto off all lighting and controlled receptacles within 20 minutes of occupants leaving.

DESIGN CONSIDERATIONS

- When lighting power in the primary sidelight area is 120 W or greater, it must have automatic daylight responsive controls installed for all general lighting in that area.
- If detection coverage is sufficient, a wall box occupancy sensor, such as a DW-311 or PW-311 can be used and also provide dimming control.
- Receptacle control can be designed using either an RF transmitter with receptacle RF receivers, or can be hardwired to receptacles using a receptacle rated Power Pack.
- Time scheduling, demand response and remote programming/ diagnostic functions are available using Wattstopper Digital Lighting Management networked products.
- To integrate occupancy detection control with the HVAC system, use a CI-300 occupancy sensor with isolated relay.

BILL OF MATERIALS

BZ-150 (1)	Power Pack
CI-305 (1)	Ceiling Mount PIR Occupancy Sensor
DCLV2 (1)	Low Voltage, 0-10V Dimming Wall Switch
WRC-TX (1)	Plug Load RF Transmitter
WRC-20-1 (4)	Plug Load Half Controlled Receptacle

CODE REQUIREMENTS

130.1(a)1-3	Area Controls
130.1(b)	Multi-Level Controls and Uniformity
130.1(c)5	Occupancy Sensor Shut-Off Controls
130.5(d)	Receptacle Control