

## CORD ORGANIZING

# CABLEMATE™

## Cord Organizers

Hide and organize home computing and home entertainment cabling.

CableMate Cord Organizers provide high capacity cable management in decorator chair rail or baseboard designs. Three internal channels provide additional cord organization. Knock-outs on end caps allow easy cord entry and exit. Paintable.



60" L x 5/16" W x 7/8" H

1524mm L x 79.4mm W x 22.2mm H



### TOOLS YOU'LL NEED:

- Phillips head screwdriver
- Utility knife
- Fine tooth hacksaw

## CABLEMATE parts checklist:



**CMK90 CableMate™ Chair Rail Kit**  
2 pieces 30" channel - C900  
2 end caps  
1 exit fitting - C92  
1 cover clip - C99  
Mounting screws



**C900 White Chair Rail Channel w/2 End Caps**  
5' chair rail cord organizer comes with end caps, screws, and anchors.



**C800 White Baseboard Channel w/2 End Caps**  
5' baseboard cord organizer comes with end caps, screws, and anchors.



**C92 White Chair Rail Cord Opening**  
Allows cord exit at any point along the chair rail.



**C82 White Baseboard Cord Opening**  
Allows cord exit at any point along the baseboard.

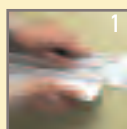


**C99 White Chair Rail Coupling**  
Covers adjoining sections of chair rail.

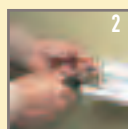


**C89 White Baseboard Coupling**  
Covers adjoining sections of baseboard.

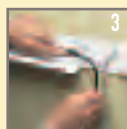
## Easy to install:



1  
If using cord opening, determine location. Cut channel as needed and install cord opening base.



2  
Mount channel to wall using screws through the guide holes.



3  
Lay cords through the compartment.



4  
Snap hinged cover shut and slide end cap over end of channel.