

## CORD ORGANIZING

# FLAT SCREEN TV

## Cord Cover Kits

The flat out easy way to hide wall mounted flat screen TV wires and cables.

Our new Flat Screen TV Cord Cover Kits make concealing the multitude of wires and cables dangling from flat screen TVs a snap. Base and cover can be cut to fit, then painted to blend seamlessly into any wall. And the snap-on/snap-off cover makes adding additional wires easy.



48" L x 3 1/2" W x 5/8" H  
1200mm L x 19mm W x 89mm H



### TOOLS YOU'LL NEED:

- Tape measure
- Phillips head screwdriver
- Fine tooth hacksaw
- Level

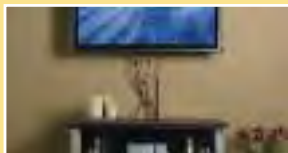
## FLAT SCREEN COVER parts checklist:



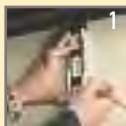
**CMK30 Flat Screen TV Cord Cover Kit**  
30" channel with pre-drilled holes for easy installation.  
Mounting hardware



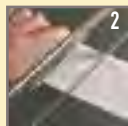
**C30 White Flat Screen TV Cord Cover Kit**  
48" channel with pre-drilled holes for easy installation.  
Mounting hardware



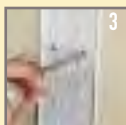
## Easy to install:



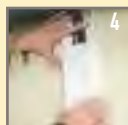
1  
Measure the wall to determine cover length.



2  
Cut cord cover to size.



3  
Using provided screws and anchors, mount base to wall.



4  
Lay cables and snap cover over base.