

## SURFACE WIRING

# PLUGMOLD®

## Multi-Outlet Strips

Power where you need it.

Plugmold multi-outlet strips deliver power where you need it. Simply mount, plug into an existing power source, and you're done. Great for the home workshop. Perfect for "invisible" outlets beneath a kitchen cabinet. The easy way to add 6 - 10 outlets.



### TOOLS YOU'LL NEED:

- Tape measure
- Phillips head screwdriver

## PLUGMOLD parts checklist:

### HARD-WIRED STRIPS\*



**V20GB306+ Ivory Multi-outlet Strip**  
36" L x 1 9/32" W x 3/4" H  
914.4mm L x 32.5mm W x 19.1mm H  
6 outlets.

**V20GB506+ Ivory Multi-outlet Strip**  
60" L x 1 9/32" W x 3/4" H  
1542mm L x 32.5mm W x 19.1mm H  
10 outlets.

### CORD-ENDED STRIPS



**PM36C Ivory Multi-outlet Strip**  
40" L x 1 9/32" W x 3/4" H  
1016mm L x 32.5mm W x 19.1mm H  
6 outlets and circuit breaker. 6' cord.

**PM48C Ivory Multi-outlet Strip**  
52" L x 1 9/32" W x 3/4" H  
1320mm L x 32.5mm W x 19.1mm H  
8 outlets and circuit breaker. 6' cord.

\*Can be fed by Wiremold metal raceway.

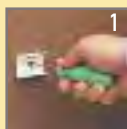
### HARD-WIRED KITS



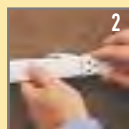
**PMKW306, white**  
**PMKB306, black**  
**PMKS306, stainless**  
**PMKV306, ivory**

Each of these kits combines a 36"6 outlet strip, a flush plate adaptor, an end feed fitting, and accessory pack.

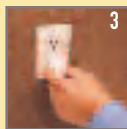
## Easy to install cord-ended strips:



Mount bracket to wall.



Attach Plugmold strip.



Plug it in.