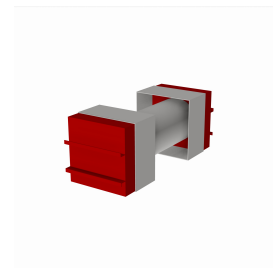


REVIT CONTENT GUIDE

Manufacturer: Wiremold
File: Wall_Sleeve-Wiremold-FireStopper.rfa
Type Catalog: Not Applicable
Rendering file: Not Applicable
Schedule file: Schedule - Wall_Sleeve-Wiremold-FireStopper.rvt



Instance Properties

Construction	
Has Conduit by Other	<input type="checkbox"/>
Has Conduit by Wiremold	<input checked="" type="checkbox"/>
Has Heat Shield	<input type="checkbox"/>
Dimension	
Depth*	9.560
Height*	6.000
Wall Depth	6.000
Width*	6.000
Identity Data	
Accessory Part Number*	FSPCC4758
Equipment Number*	
Part Description*	FlameStopper, 4 In. Red
Part Number*	FS4R-RED
Text	
Configuration	Available

Type Properties

The family contains the following 4 types:

- Firestop 4 In. Fitting, Red (Values for this type are shown below)
- Firestop 2 In. Fitting, Galvanized
- Firestop 2 In. Fitting, Red
- Firestop 4 In. Fitting, Galvanized

Constraints	
Default Elevation	48.000
Identity Data	
Copyright*	Copyright © Wiremold
Date Created*	September 5, 2014
Date Modified*	September 5, 2014
Description	FlameStopper, 4 In. Red
Equipment Abbreviation*	CTA
Family Version*	1.0
Manufacturer	Wiremold
Model	FS4R-RED
Model Disclaimer*	For More Information, Contact Wiremold
Product Documentation Link*	http://www.legrand.us/~media/products/resources/wiremold-products/firestop-fittings/wall/wall/flamestopper-thru-wall-and-thru-floor-fittings/ed1312R5pdf.ashx
Product Page URL*	http://www.legrand.us/wiremold/firestop-fittings/fs-flamestopper-thru-wall-and-thru-fl

Identity Data	
	oor-fittings.aspx
URL	http://www.legrand.us/wiremold.aspx
Materials	
Product Material*	Steel - Wiremold - Red

Halftone text in the property tables indicates that the value is locked from editing.

*Indicates Shared Parameter and can be scheduled

Loading and Placing into the Project

One “Specialty Equipment” family is supplied and can be loaded into a Revit project through all traditional methods. The wall sleeve requires a Work Plane host to be placed within the project (i.e. Wall). The family is designed to be placed in either plan view or a 3D view. If the family is placed in plan view, then the elevation can be changed by editing the family’s Elevation parameter. Also, ensure that the visibility settings within the project are modified to have the Specialty Equipment category visible.

Project Behavior

This wall sleeve must be placed manually onto an existing wall. If an error in configuration selection occurs, a red box will envelop the wall sleeve and the “error message” will be displayed under the family’s Configuration parameter within the Properties dialogue window. The error message displayed will describe what caused the error, and how it can be fixed. When an error does occur, then the current configuration no longer represents an accurate model. If a custom part is necessary, then please contact the manufacturer.

When using the heat shield option the user must change the family’s Wall Depth parameter so that it matches the depth of the wall it is being used on. The family uses this information in order to gauge where the wall is and adjust the length of the heat shield accordingly.

This family includes options that utilize separately ordered parts and accessories. When an appropriate configuration is selected, the part number(s) of any additional parts will be displayed under the Accessory Part Number parameter within the properties dialogue window. If multiple part numbers are displayed and are separated by commas, then multiple parts are being used within the family and the user should note that these are separate part numbers.

Within the type and instance properties dialogues, the user will find useful information for scheduling purposes such as Height, Width, Accessory Part Number and other unique properties of the model. In “Identity Data” the user will find information specific to Wiremold and the model, i.e.: family revision information, Wiremold copyright information, part description, product URL and other specific data. *See scheduling description below.

Instance Parameter

In the “Instance Parameters”, the user has the following options to modify:

- Equipment Number - For tagging individually placed instances.
- Elevation - For changing the height of the family above the floor.
- Has Heat Shield - For toggling the use of the heat shield
- Has Conduit by Other - For toggling the use of the Wiremold conduit or a replacement conduit.
- Wall Depth - For inputting the desired wall depth for the family.

Type Parameter

Each type represents a manufactured product. Therefore, the type parameters should not be modified by the user. Please note:

- Product Documentation Link - Directs a webpage to the products online spec sheet.
- Product Page URL - Directs a webpage to the products online listing.
- Provide Feedback - Directs a webpage for the user to leave comments about the model.
- Equipment Abbreviation - For filtering schedules. *See scheduling description below.

Visibility

For best performance, all model geometry is turned off in Plan View and represented through masking regions and symbolic/model lines that update automatically when a user changes types.

Rendering

When the family file is loaded into the project, standard Wiremold materials are imported. These may be modified, though ensure that the modification selection matches an actual manufacturer supplied option.

Schedule Creation

Wiremold products may be scheduled utilizing the schedule view in the given project file. Select and copy (Ctrl-C) the schedule from the sheet view and paste it (Ctrl-V) into a sheet in your project. The schedule filters are set to look for only those units designated with Manufacturer as “Wiremold” and Equipment Abbreviation as “CTA”. The schedules contain special functionality for displaying the configured order numbers of the different selected types.