



INTRODUCING THE FURNITURE FEED THAT CUTS CORNERS. NOT QUALITY.

Introducing a round design for
faster, easier installation.



6FF-AFB

Accepts Round Evolution™ Series Furniture
Feed Poke-Thru covers, available in a
variety of finishes to match your décor.



With a new box design, the FloorSource™ Series Round Furniture Feed Floor Box is very well-rounded.

Not only does the device install quickly and easily, but it looks good doing it. With a variety of cover finishes, it fits into almost any environment. And fits in with almost any floor box or poke-thru device.

And it doesn't just deliver on style. With increased capacity, this furniture feed delivers more power and communications or preterminated A/V cables than ever before.

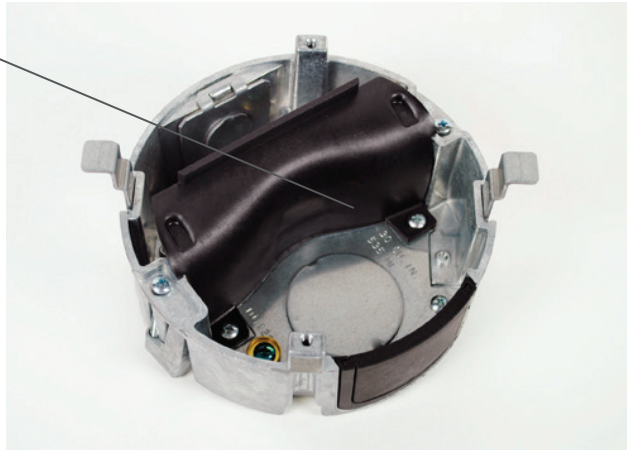
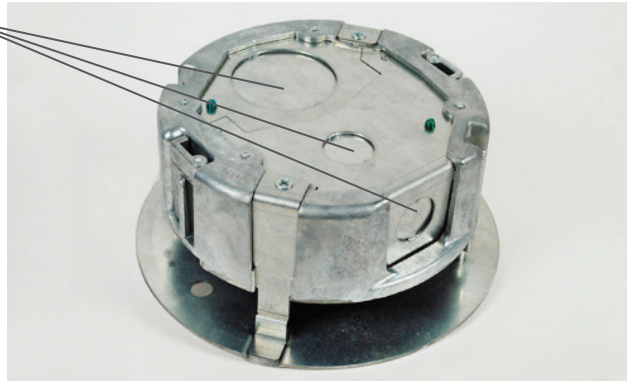
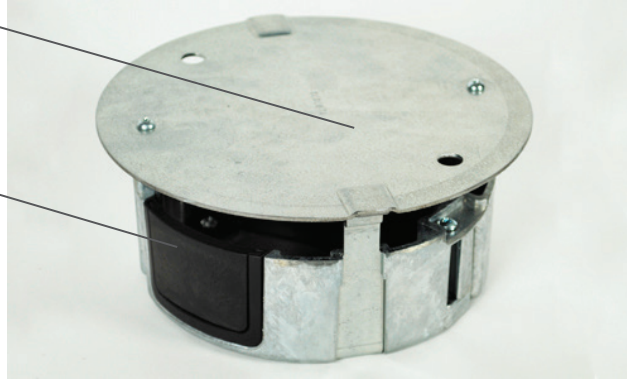
Whether your environment is a commercial office, a financial institution, or an education or hospitality location, this new twist on the same high-quality box will help you make the cut with ease.

Durable construction cap protects the box during installation and construction.

Large capacity side entrance provides 3" capacity for a large bundle of communication cables or pre-terminated A/V cables.

Multiple size knockouts range in size from 3/4" to 1 1/2", allowing for multiple activations and wiring configurations.

Dual service capacity and a removable divider separate services for maximum flexibility.



Electrical Wiring Systems

60 Woodlawn Street
West Hartford, CT 06110
1.877.BY.LEGRAND (295.3472)
www.legrand.us

570 Applewood Crescent
Vaughan, Ontario L4K 4B4
905.738.9195
www.legrand.ca

FOLLOW US

