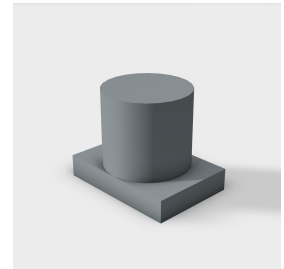




Wiremold

REVIT CONTENT GUIDE

Manufacturer:	Legrand Wiremold
File:	Accessory-Floor_Box-Wiremold-2HUB.rfa
Type Catalog:	Not Applicable
Rendering file:	Not Applicable
Schedule file:	Schedule - Accessory-Floor_Box-Wiremold-2HUB.rvt



Instance Properties

Identity Data	
Equipment Number	
Part Description	2" Conduit HUB
Part Number	2HUB

Type Properties

The family contains the following 1 types:
Standard (Values for this type are shown below)

Geometry	
Depth	2.500
Height	2.875
Width	3.600
Identity Data	
Copyright	Copyright © Legrand Wiremold
Date Last Modified	October 22, 2013
Description	2" Conduit HUB
Equipment Abbreviation	CF
Family Version	1.0.0
Manufacturer	Legrand Wiremold
Model	2HUB
Model Disclaimer	Contact Legrand Wiremold for more information
Original Creation Date	October 22, 2013
Product Documentation Link	http://www.legrand.us/~ /media/1C0B35ADA54148589533FC1A948EF7CA.ashx
Product Page URL	http://www.legrand.us/wiremold/floor-boxes/concrete-floor-boxes/efb6s-evolution-si-x-gang-floor-boxes/efb6s-2hub-2-inch-conduit-hub.aspx#.UOX8RHfW71U
Provide Feedback	https://www.surveymonkey.com/s/BDXT5XT
URL	http://www.legrand.us/wiremold.aspx
Materials	
Product Material	Die Cast Zinc - Wiremold - Silver

Half-tone text in the property tables indicates that the value is locked from editing.

Loading and Placing into the Project:

One "Electrical Fixtures" family is supplied and can be loaded into a Revit project through all traditional methods. The conduit hub requires a host to be placed within the project (i.e. outside faces of compatible floor boxes & accessories). Also, ensure that the visibility settings within the project are modified to have the Electrical Fixtures category visible.

Project Behavior:

Within the type properties, the user will find useful information about the product by following the URL links given. The user will also find family revision information, Legrand | Wiremold copyright information, part description, product URL and other specific data. *See scheduling description below.

This conduit hub should be placed on the outside faces of compatible devices when a conduit connection transition is needed. For easy placement, 'snap locations' exist on compatible devices that correspond with the placement origin of the 2HUB model. The 2HUB device will automatically snap to the gray 'crosshairs' that are formed by the snap locations. Once placed, a user may select the hub, right click on the connection point and draw conduit from that location.

Refer to product documentation for intended devices, placement location, requirements, and options.

Instance Parameters:

No configurable instance parameters exist in this model

Type Parameters:

Each type represents a manufactured product. Therefore, the type parameters should not be modified by the user. Please note:

Product Documentation Link – Directs a webpage to the products online listing.

Equipment Abbreviation – For filtering schedules. *See scheduling description below.

Visibility:

For best performance, all model geometry is turned off in Plan View and represented through masking regions and symbolic/model lines that update automatically when a user changes types. Model lines on the face of the plate represent the connection pattern for compatible devices. Refer to product documentation for more information.

Rendering:

When the family file is loaded into the project, standard Legrand | Wiremold materials are imported. These may be modified, though ensure that the modification selection matches an actual manufacturer supplied option.

Schedule Creation:

LeGrand | Wiremold products may be scheduled utilizing the schedule view in the given project file. Project schedules are available for each floor box and match the floor box file name. Device plate schedules are also available. Select and copy (Ctrl-C) the schedule from the sheet view and paste it (Ctrl-V) into a sheet in your project. The schedule filters are set to look for only those units designated with Manufacturer as “LeGrand | Wiremold” and Equipment Abbreviation as “CF”. The schedules contain special functionality for displaying the configured order numbers of the different selected types.