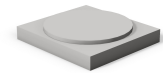


Wiremold

REVIT CONTENT GUIDE

Manufacturer:	Legrand Wiremold
File:	Junction_Box-Walkercell-Wiremold.rfa
Type Catalog:	Not Applicable
Rendering file:	Not Applicable
Schedule file:	Schedule - Walkercell.rvt



Instance Properties

Dimension	
Depth of Concrete Over Duct Actual	1.500
Depth of Concrete Over Duct Desired	1.000
Graphics	
Has Duct Alignment Lines	<input checked="" type="checkbox"/>
Has Snap Locations	<input checked="" type="checkbox"/>
Identity Data	
Equipment Number	
Part Description	Walkercell Junction Box with Four WCR3 Openings
Part Number	33JB25 10

Type Properties

The family contains 5 types. These are a few of the types:

- Four WCR 1 1/2 (Values for this type are shown below)
- Four WCR 2
- Four WCR 3
- Two WCR 1 1/2 and Two WCR 2

Dimension	
Depth	26.000
Height	3.500
Width	24.000

Identity Data	
Copyright	Copyright © Legrand Wiremold
Date Last Modified	March 15, 2013
Description	See Part Description
Equipment Abbreviation	WC
Family Version	1.0.0
Manufacturer	Legrand Wiremold
Model	See Part Number
Model Disclaimer	For More Information, Contact Legrand Wiremold
Original Creation Date	March 15, 2013
Product Documentation Link	http://www.legrand.us/~media/028DDC19E7AD40868F14DEB257230B6E.ashx
Product Page URL	http://www.legrand.us/wiremold/infloor-ducts/ducts/walkercell-cellular-raceway.aspx#UZwCx8qO424
Provide Feedback	https://www.surveymonkey.com/s/BDXT5XT
URL	http://www.legrand.us/wiremold.aspx
Materials	
Product Material	Steel - Wiremold

Half tone text in the property tables indicates that the value is locked from editing.

Loading and Placing into the Project:

One “Electrical Fixtures” family is supplied and can be loaded into a Revit project through all traditional methods. The Junction Box requires a work-plane host to be placed within the project (i.e. floor). Also, ensure that the visibility settings within the project are modified to have the Electrical Fixtures category visible.

Project Behavior:

Within the type and instance properties dialogues, the user will find useful information for scheduling purposes such as Height, Width, Depth of Concrete Over Duct Actual and other unique properties of the model. In “Identity Data” the user will find information specific to Legrand | Wiremold and the model, i.e.: family revision information, Legrand | Wiremold copyright information, part description, product URL and other specific data.

*See scheduling description below.

The depth of concrete over the duct will affect how far into the ground the junction box will sit. The junction box has snap locations on each side to allow for the placement of reducers and other fittings.

The duct and other families share a common offset location, this gives the user the ability to select all models (with the exception of any face based families) within the project and offset the models into the ground.

Instance Parameters:

In the “Instance Parameters”, the user has the following options to modify:

Equipment Number – For tagging each placed instance.

Has Snap Locations – Toggles the visibility of the snap location crosshairs.

Depth of Concrete Over Duct Desired – For inputting a desired Slab Depth.

Has Duct Alignment Lines – For toggling the visibility for the lines in plan view used to show where the ducts will meet up with the box.

Type Parameters:

Each type represents a manufactured product. Therefore, the type parameters should not be modified by the user for standard configuration. Please note:

Product Documentation Link – Directs a webpage to the products online listing.

Equipment Abbreviation – For filtering schedules. *See scheduling description below.

Visibility:

For best performance, all model geometry is turned off in Plan View and represented through masking regions and symbolic/model lines that update automatically when a user changes types. For most families the viewing range will have to be lowered since no geometry is visible above the reference level.

Rendering:

When the family file is loaded into the project, standard Legrand | Wiremold materials are imported. These may be modified, though ensure that the modification selection matches an actual manufacturer supplied option.

Schedule Creation:

Legrand | Wiremold products may be scheduled utilizing the schedule view in the given project file. Select and copy (Ctrl-C) the schedule from the sheet view and paste it (Ctrl-V) into a sheet in your project. The schedule filters are set to look for only those units designated with Manufacturer as “Legrand | Wiremold” and Equipment Abbreviation as “WC”. The schedules contain special functionality for displaying the configured order numbers of the different selected types.