



## Walker® Infloor Systems

### RC7 Poke-Thru Abandonment Plate

Cat. No. RC7AP

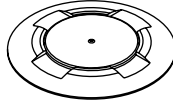
## INSTALLATION INSTRUCTIONS

Walker® electrical systems conform to and should be properly grounded in compliance with requirements of the current National Electrical Code or codes administered by local authorities.

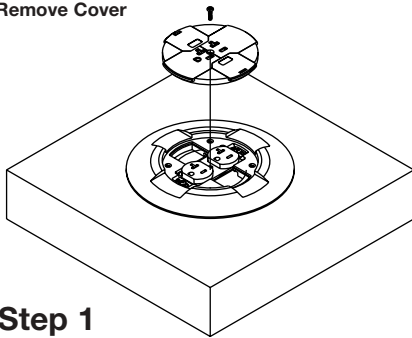
All electrical products may present a possible shock or fire hazard if improperly installed or used. Walker electrical products may bear the mark as UL Listed and/or Classified and should be installed in conformance with current local and/or the National Electrical Code.

Products Covered: RC7APBK and RC7APVY

### Option 1 – With Receptacle In Place:

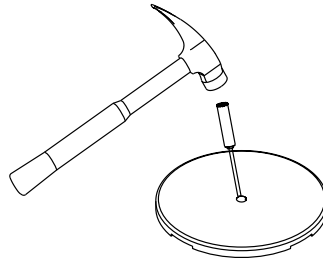


Remove Cover



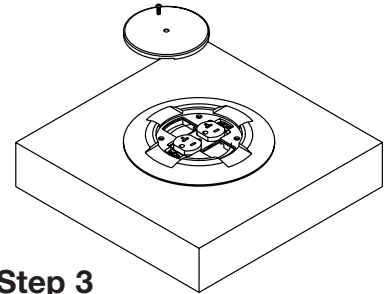
Step 1

Punch Out Center Hole



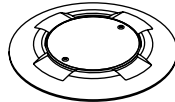
Step 2

Attach Plate Using Screw Provided

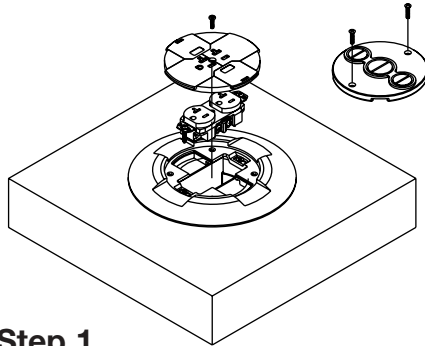


Step 3

### Option 2 – With Receptacle Out:

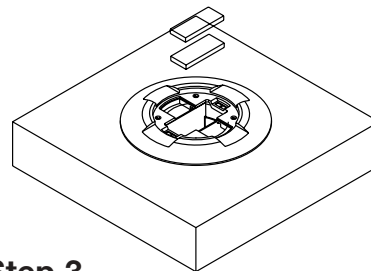


Remove Cover, Receptacle and Receptacle Wires or Conduit Adapter Assembly



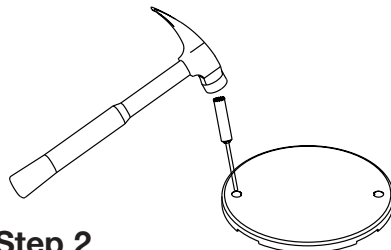
Step 1

Place Intumescent Wafers



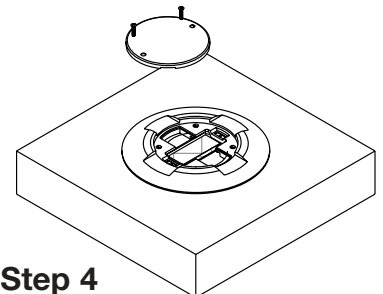
Step 3

Punch Out Both End Holes



Step 2

Attach Plate Using Screws Provided



Step 4

