

WIREMOLD



ALDS4000 Raceway Base & Cover INSTALLATION INSTRUCTIONS

Installation Instruction No.: 43371R1 – Updated August 2007

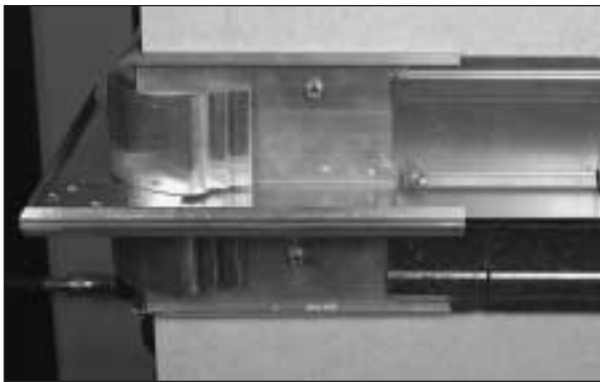
Wiremold / Legrand Electrical Systems conform to and should be installed and properly grounded in compliance with requirements of the current National Electrical Code, Canadian Electrical Code, or codes administered by local authorities.

All electrical products may represent possible shock or fire hazard if improperly installed or used. Wiremold electrical products are UL listed to U.S. and Canadian safety standards, made for interior use only, and should be installed in conformance with current local and/or the National Electrical Code.



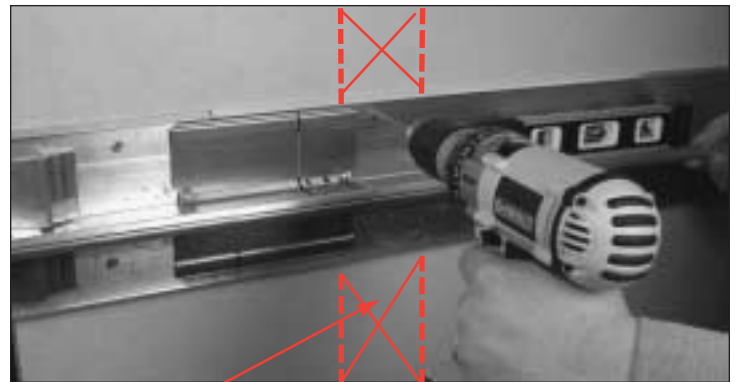
Products Covered: ALDS4000B, ALDS4000C.

Step 1. If the installation requires Fittings, start at an appropriate location such as a corner. Refer to specific fitting installation instructions for proper mounting. Attach Adjust-to-Fit™ Couplings to Fittings and tighten.



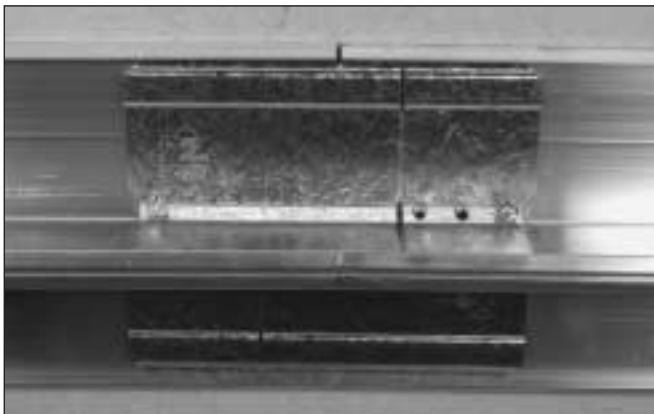
NOTE: ALDS4000B Raceway Base includes Couplings and Wire Clips. Wire Clips are factory installed in the lower Channel of each Raceway Base Section. Make sure Base Sections are properly oriented prior to securing to the Wall

Step 2. Slide ALDS4000B Base Section onto Couplings and tighten Screws. Drill a hole in each Channel of the Base at the first Stud to secure to the Wall using a #8 Fastener. Secure to Wall no more than 48" [1.2m] apart.



Stud Location

Step 3. Butt succeeding ALDS4000B Sections to the installed Base Section and mount using the same method as in Step 2.



Step 4. Install the next Fitting. Place an ALDS4000B Base Section in line with the last piece of Base that was mounted. Mark where the Base lines up with the Fitting and cut at this point. Precise cuts are not required since the Adjust-to-Fit™ Coupling will maintain the integrity of the Base where there are any gaps between Sections. Adjust-to-Fit™ Coupling can span gaps up to 4" [102mm].



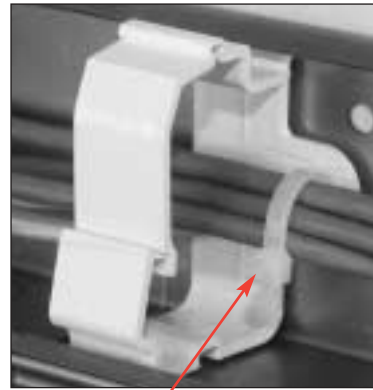
NOTE: For backfeeding raceway, a hole may be drilled into either channel of ALDS4000B to connect 1 1/4 trade size or smaller conduit.

For more information, visit www.wiremold.com/ds4000.

Wire Clip Installation – Additional Wire Clips are provided for the upper Channel of the Raceway.



Rotate Clip and snap into place.

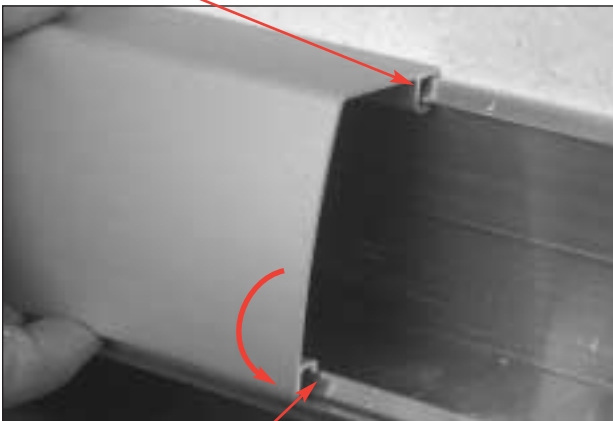


Wire Ties can be added if desired.

ALDS4000C COVER INSTALLATION:

Step 1.

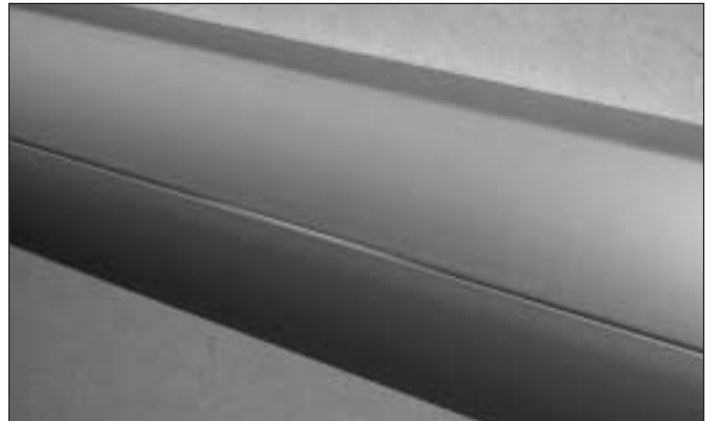
Hook Cover into Base Section.



Snap Cover into place to complete installation.

Step 2.

Installation Complete.



ALDS4000C COVER REMOVAL:

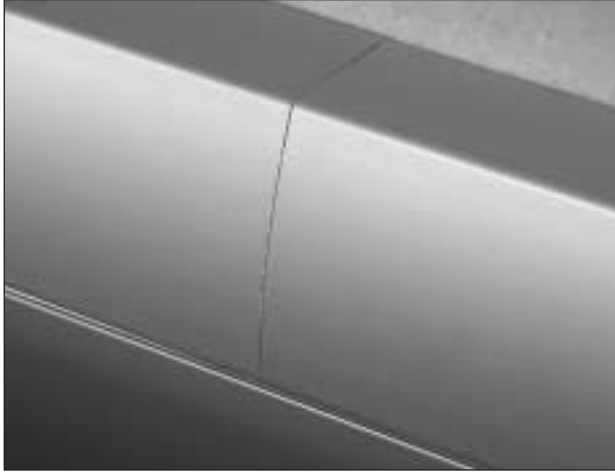
Slide a 2" [51mm] or wider metal Putty Knife into the Seam between Covers. The Covers will break free from the Base. Slide the Putty Knife along the section of Cover until it unsnaps completely.



ALDS4006 SEAM CLIP INSTALLATION (optional):

Step 1.

The ALDS4006 Seam Clip is used to cover the cut edge of a ALDS4000C Cover Section. Make sure any gaps between Raceway Covers are less than 1/16" [1.5mm].



Step 2.

Installation Complete.



ALDS4000 Raceway Wire Fill Capacities for Power

WIRE SIZE THHN/THWN	O.D. Inches [mm]		NUMBER OF CONDUCTORS (40% FILL)			
			WITHOUT DEVICES	w/DUPLEX RECT. DEVICE 1.59in. ² [1025mm ²]	w/SURGE GFCI DEVICE 2.30in. ² [1485mm ²]	LARGE SINGLE RECEPTACLE 3.00in. ² [1935mm ²]
14 AWG	0.111	[2.8]	200	134	105	76
12 AWG	0.130	[3.3]	146	98	77	56
10 AWG	0.164	[4.2]	92	62	48	35
8 AWG	0.216	[5.5]	53	36	28	20
6 AWG	0.254	[6.5]	38	26	20	15

NOTE: For additional information, refer to the Technical Section of the current version of ED439 (Wiremold Buyer's Guide).

ALDS4000 Raceway Wire Fill Capacities for Communication

CABLE TYPE	CATEGORY/ DESIGNATION	O.D.		40% FILL 1/2 COMPARTMENT
		Inches	[mm]	
UNSHIELDED TWISTED PAIR	4-pair, 24 AWG Cat 3	0.190	[4.8]	68
	4-pair, 24 AWG Cat 5e	0.210	[5.3]	56
	4-pair, 24 AWG Cat 6	0.250	[6.3]	40
	4-pair, 24 AWG Cat 6a*	0.335	[8.5]	22
	25-pair, 24 AWG	0.360	[9.1]	18
COAXIAL	RG6/U	0.270	[6.9]	34
FIBER	ZipCord	0.118 x 0.236	[3 x 6]	70
	Round 4 Strand Fiber	0.187	[4.8]	71
	Round 6 Strand Fiber	0.256	[6.5]	38

*Category 6 Augmented cable for 10 gigabit ethernet – max allowed cable diameter per Addendum 11 to ANSI/TIA-568-B.2.

ALDS4000 Raceway Fittings Wire Fill Capacity Chart

WIRE SIZE THHN	O.D. Inches [mm]	ALDS4011		ALDS4015		ALDS4017		ALDS4018			
		40%*	60%*	40%**	60%**	40%**	60%**	40%**	60%**		
THHN	14	0.111	[2.8]	122	182	49	73	75	112	133	199
	12	0.130	[3.3]	89	133	35	53	54	82	97	145
	10	0.164	[4.2]	56	84	22	34	34	51	61	92
	8	0.216	[5.5]	32	48	13	19	20	30	35	53
	6	0.254	[6.5]	23	35	9	14	14	21	25	38
UTP	2-pair, 24 AWG	0.150	[4.8]	67	100	27	40	41	61	73	109
	4-pair, 24 AWG Cat 3	0.190	[4.8]	42	62	17	25	25	38	45	68
	4-pair, 24 AWG Cat 5e	0.210	[5.3]	34	51	14	20	21	31	37	56
	4-pair, 24 AWG Cat 6	0.250	[6.3]	24	36	10	14	15	22	26	39
	4-pair, 24 AWG Cat 6a*	0.354	[9.0]	13	20	5	8	8	12	15	22
	25-pair, 24 AWG	0.410	[10.4]	12	17	5	7	7	11	13	10
Coaxial	RG6/U	0.270	[6.9]	21	31	8	12	13	19	22	24
Fiber	ZipCord	0.118 x 0.236	[3 x 6]	42	64	17	25	26	39	46	69
	Round 4 Strand Fiber	0.187	[4.8]	43	64	17	26	26	40	47	70
	Round 6 Strand Fiber	0.256	[6.5]	23	34	9	14	14	21	25	38

* Entrance end fitting fill rate is calculated using backfeed capability and radius inserts. Inserts are removable and fitting can obtain maximum raceway fill from utilizing end fitting knockouts and removing radius control inserts.

** Calculated using radius control inserts. Inserts are factory installed and may be removed in order to obtain full raceway capacity if radius control is not required.

For more information, visit www.wiremold.com/DS4000.

WIREMOLD



Wiremold / Legrand

U.S. and International:

60 Woodlawn Street • West Hartford, CT 06110

1-800-621-0049 • FAX 860-232-2062 • Outside U.S. 860-233-6251

Canada:

570 Applewood Crescent • Vaughan, Ontario L4K 4B4

1-800-723-5175 • FAX 905-738-9721

