

WIREMOLD



ALDS4000 Elbow Fittings INSTALLATION INSTRUCTIONS

Installation Instruction No.: 43372R1 – Updated April 2006

Wiremold / Legrand Electrical Systems conform to and should be installed and properly grounded in compliance with requirements of the current National Electrical Code, Canadian Electrical Code, or codes administered by local authorities.

All electrical products may represent possible shock or fire hazard if improperly installed or used. Wiremold electrical products are UL listed to U.S. and Canadian safety standards, made for interior use only, and should be installed in conformance with current local and/or the National Electrical Code.



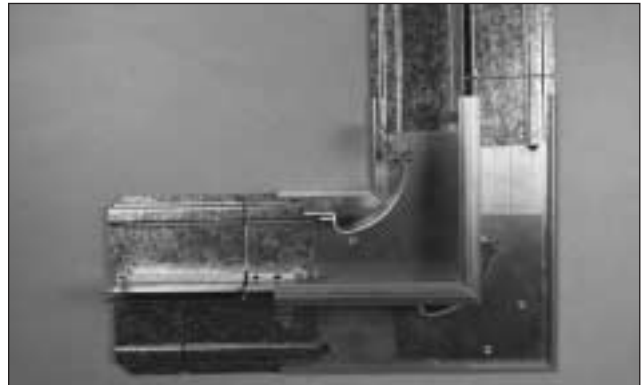
Products Covered: ALDS4011, ALDS4015, ALDS4017, ALDS4018, ALDS4010A & ALDS4010B

TO MOUNT ALDS4011, ALDS4015, ALDS4017, ALDS4018:

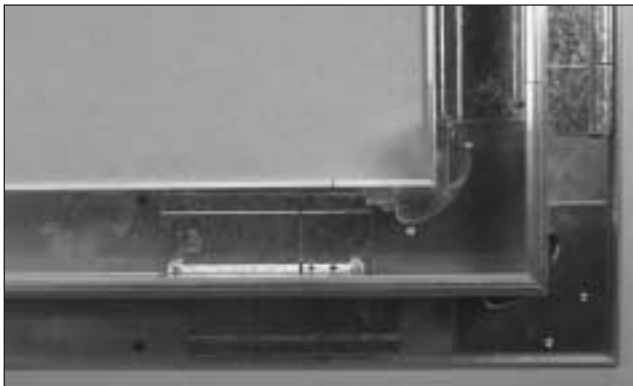
Step 1. Drill mounting hole into the base. Line the hole up with the screw clearance groove in a coupling.



Step 2. Mount fitting to wall with #8 screws. (Not provided) Install couplings as shown.



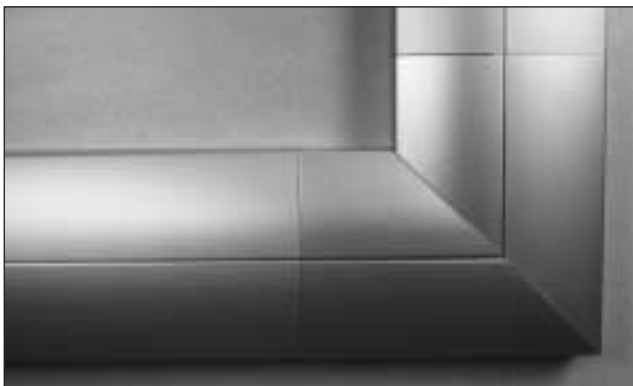
Step 3. Install raceway base. Refer to Raceway base installation instructions for proper mounting.



Step 4. Snap on fitting covers as shown.

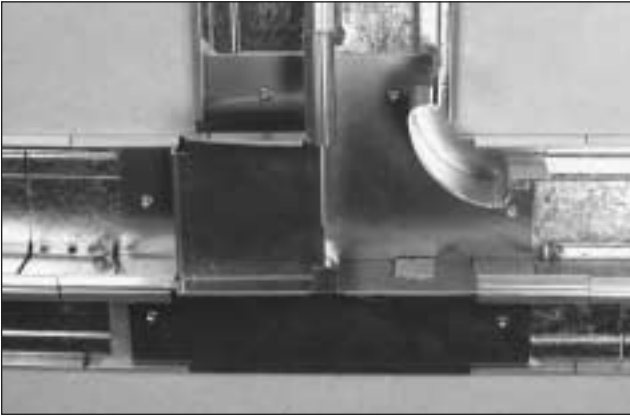


Step 5. Install raceway covers to complete installation.

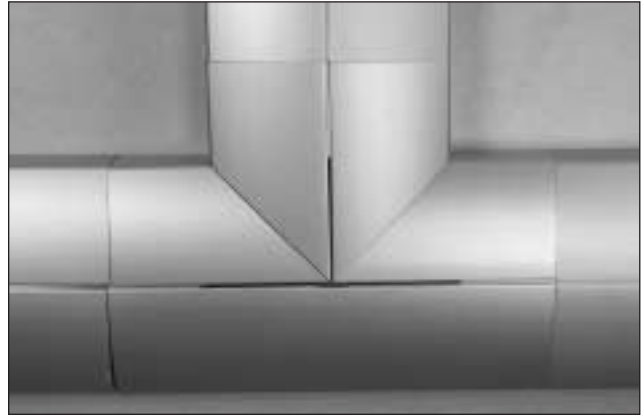


For more information, visit www.wiremold.com/ds4000.

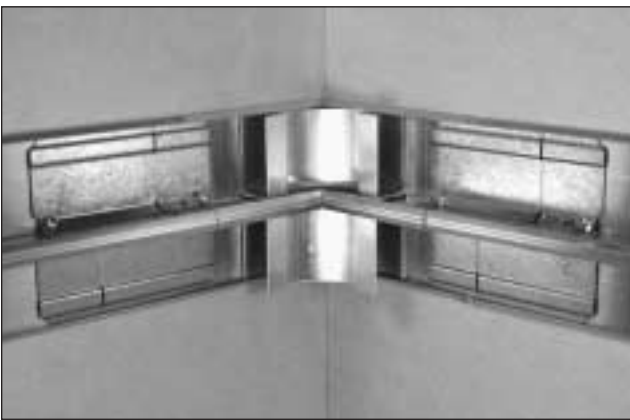
ALDS4015: Installed fitting base.



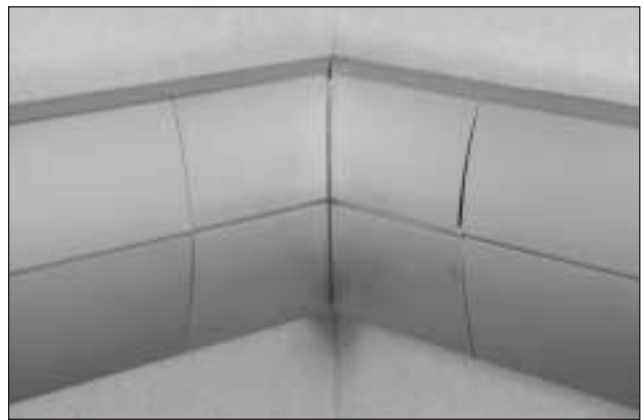
ALDS4015: With covers installed.



ALDS4017: Installed fitting base.



ALDS4017: With covers installed.



ALDS4018: Installed fitting base.



ALDS4018: With covers installed.

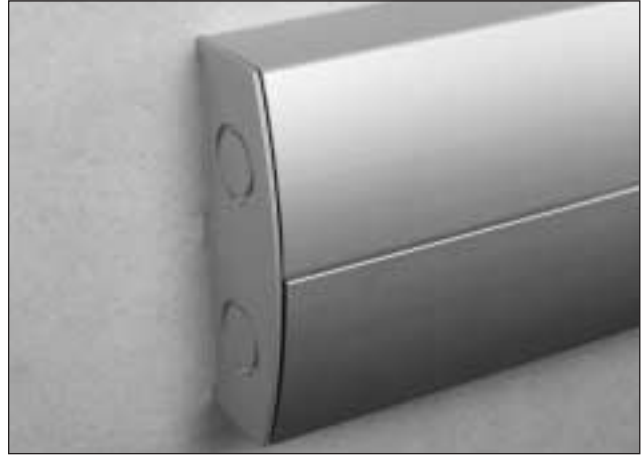


TO MOUNT ALDS4010A, ALDS4010B:

Step 1. Insert ALDS4010A Entrance End Fitting onto the end of ALDS4000B Raceway Base and tighten screws to secure.



Step 2. Snap ALDS4000C Raceway Cover sections onto ALDS4000B Raceway Base to complete installation.



ALDS4000 Raceway Wire Fill Capacities for Power

WIRE SIZE THHN/THWN	O.D. Inches [mm]		NUMBER OF CONDUCTORS (40% FILL)			
			WITHOUT DEVICES	w/DUPLEX RECT. DEVICE 1.59in. ² [1025mm ²]	w/SURGE GFCI DEVICE 2.30in. ² [1485mm ²]	LARGE SINGLE RECEPTACLE 3.00in. ² [1935mm ²]
14 AWG	0.111	[2.8]	200	134	105	76
12 AWG	0.130	[3.3]	146	98	77	56
10 AWG	0.164	[4.2]	92	62	48	35
8 AWG	0.216	[5.5]	53	36	28	20
6 AWG	0.254	[6.5]	38	26	20	15

NOTE: For additional information, refer to the Technical Section of the current version of ED439 (Wiremold Buyer's Guide).

ALDS4000 Raceway Wire Fill Capacities for Communication

CABLE TYPE	CATEGORY/ DESIGNATION	O.D.		40% FILL 1/2 COMPARTMENT
		Inches	[mm]	
UNSHIELDED TWISTED PAIR	4-pair, 24 AWG Cat 3	0.190	[4.8]	68
	4-pair, 24 AWG Cat 5e	0.210	[5.3]	56
	4-pair, 24 AWG Cat 6	0.250	[6.3]	40
	4-pair, 24 AWG Cat 6a*	0.335	[8.5]	22
	25-pair, 24 AWG	0.360	[9.1]	18
COAXIAL	RG6/U	0.270	[6.9]	34
FIBER	ZipCord	0.118 x 0.236	[3 x 6]	70
	Round 4 Strand Fiber	0.187	[4.8]	71
	Round 6 Strand Fiber	0.256	[6.5]	38

*Category 6 Augmented cable for 10 gigabit ethernet – max allowed cable diameter per Addendum 11 to ANSI/TIA-568-B.2.

ALDS4000 Raceway Fittings Wire Fill Capacity Chart

WIRE SIZE THHN	O.D. Inches [mm]	ALDS4011		ALDS4015		ALDS4017		ALDS4018	
		40%	60%	40%**	60%**	40%**	60%**	40%**	60%**
THHN 14	0.111 [2.8]	122	182	49	73	75	112	133	199
	0.130 [3.3]	89	133	35	53	54	82	97	145
	0.164 [4.2]	56	84	22	34	34	51	61	92
	0.216 [5.5]	32	48	13	19	20	30	35	53
	0.254 [6.5]	23	35	9	14	14	21	25	38
UTP 2-pair, 24 AWG	0.150 [4.8]	67	100	27	40	41	61	73	109
	0.190 [4.8]	42	62	17	25	25	38	45	68
	0.210 [5.3]	34	51	14	20	21	31	37	56
	0.250 [6.3]	24	36	10	14	15	22	26	39
	0.354 [9.0]	13	20	5	8	8	12	15	22
	0.410 [10.4]	12	17	5	7	7	11	13	10
Coaxial RG6/U	0.270 [6.9]	21	31	8	12	13	19	22	24
Fiber ZipCord	0.118 x 0.236 [3 x 6]	42	64	17	25	26	39	46	69
	0.187 [4.8]	43	64	17	26	26	40	47	70
	0.256 [6.5]	23	34	9	14	14	21	25	38

* Entrance end fitting fill rate is calculated using backfeed capability and radius inserts. Inserts are removable and fitting can obtain maximum raceway fill from utilizing end fitting knockouts and removing radius control inserts.

**Calculated using radius control inserts. Inserts are factory installed and may be removed in order to obtain full raceway capacity if radius control is not required.

For more information, visit www.wiremold.com/ds4000.

WIREMOLD



Wiremold / Legrand

U.S. and International:

60 Woodlawn Street • West Hartford, CT 06110

1-800-621-0049 • FAX 860-232-2062 • Outside U.S. 860-233-6251

Canada:

570 Applewood Crescent • Vaughan, Ontario L4K 4B4

1-800-723-5175 • FAX 905-738-9721

