

# Installation Instructions

## Raised Floor Enclosures

RFE-25256

RFE-25257RB

RFE-242412

- (1) These enclosures are passive termination/distribution point designed for distribution of low voltage cabling only.
- (2) The raised/access flooring must be installed prior to the installation of this enclosure. This enclosure is designed to be installed within the stringer grid of the raised floor in accordance with local codes and regulations.

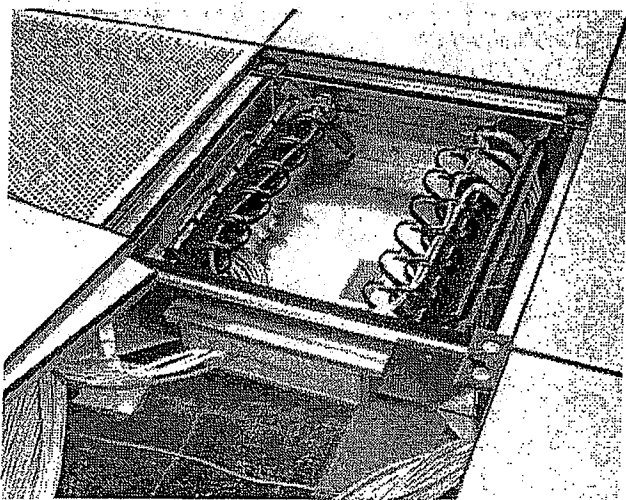
*Note: These units require fire rated cable penetration foam kits (included). These kits are designed for simple (in the field) installation. Installation instructions are included as Exhibit "A" incorporated in these instructions.*

### ■ Assembly Components

- 1 ea. - Raised Floor Enclosure
- 4 ea. - Leveler Bolts
- 4 ea. - Support Brackets (RF-BKT)
- 4 ea. - Cable Entry Port Covers
- Plenum Rated Foam Kit (Foam Kit #5)
- Installation Instructions

### ■ Installation Tools and Supplies to be provided by Installer

1. Suction cup or other floor tile removal tool
2. Open end wrenches (7/16" & 1/2")
3. Screw drivers flathead / Phillips head for stringer removal



### STEP 1

#### Opening the Shipping Box and Removal of the Raised Floor Enclosure

- Prepare a location for the raised floor to be positioned for inspection after removal from the shipping container. Remove the raised floor from the shipping container and place it on its side. Be sure you have the appropriate enclosure for the depth of access floor.

**Make sure to remove all necessary mounting accessories before discarding boxes. These would include fire-rated foam kits and (4) floor pedestal brackets.**

### STEP 2

#### Locating Enclosure Placement

- Select the location of the installation and remove all obstacles that would interfere with the installation.

### STEP 3

#### Floor Tile Removal

- First remove the floor tile from the location specified for installation of the raised floor. Now remove the 4 tiles adjacent to the space allocated for the installation. The section of floor without tiles should now look like a "+". In new construction the floor tiles would not be in place yet.

### STEP 4

#### Stringer Removal

- Remove all the stringers surrounding the tile under which the enclosure will be positioned. Set them aside. They will be replaced once the enclosure is placed under the level of the stringer system.

### STEP 5

#### Install Support Brackets

- The support brackets are to be mounted under the enclosure. Mount the four support brackets by placing one on each corner support stanchion, pointed towards the center of the enclosure. Make sure the brackets are mounted low enough, leaving adequate space for the enclosure to clear the level of the floor.

### STEP 6

#### Install Enclosure

- Place the enclosure on the support brackets.

# Installation Instructions

## **STEP 7**

### **Position Enclosure**

1. Replace the stringers and tighten down the screws. Slide the enclosure up the support stanchions until the upright part of the wings center themselves up in the stringers. Tighten the nuts on the support brackets to secure the enclosure up under the stringer grid. Use the leveler screws (in the holes provided in the bottom of the enclosure) to level or tighten the unit to the stringers.
2. Replace the tile and make sure that it sits properly. If not, adjust the position of the enclosure.

## **STEP 8**

### **Install Cables**

- With the enclosure in place and supported, install the cables. Secure cables with Saf-T-Grip® Cable Management Straps (P/N 02006-201)

## **STEP 9**

### **Terminate Cables**

- Prepare all cable ends and terminate according to equipment manufacturer's specifications.

## **STEP 10**

### **Install Patch Panels**

- Attach patch panels with #12-24 equipment mounting screws (P/N 40605-001)

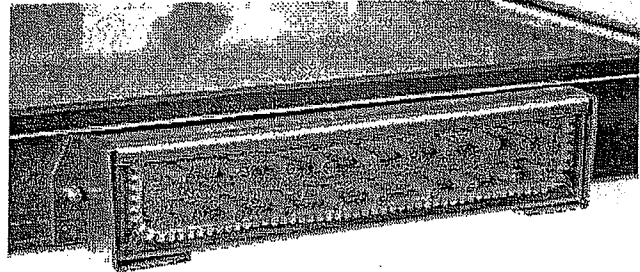
## **STEP 11**

### **Dress Cables**

- Dress cables slack with Saf-T-Grip® Cable Management Straps (P/N 02006-201)

## **STEP 12**

### **Install Foam Penetration Kits (See Exhibit "A")**



## **Exhibit "A"**

### **Installation instructions for Installing Fire Penetration Kits**

*These kits are used to seal the unit with Fire Penetration Foam around installed access cables into the Raised Floor Enclosure.*

1. Remove the top plate from the first penetration to be cabled.
2. Sort and comb your cables for smooth and straight access through the penetration.
3. Lift the cables and place two layers of foam underneath the cables.
4. Place cables and space so you can insert strips of foam between them firmly to create a seal. Cut foam strips at least 3/8" width to be placed between the cables.
5. Put down a layer of foam and repeat the process until all cables are beaded between layers of foam.
6. Take the remainder of the foam and fill the void to the top of the penetration and compress down with the top plate. Be careful not to bind cables in excess of cable manufacturers specifications. Cables are installed.

*Installation hint: We suggest you stagger the cables in their layers to give a better seal. Example: 1st row - 4 cables / 2nd row - 5 cables / 3rd row - 6 cables / 4th row - 5 cables / 5th row - 6 cables and so on.*