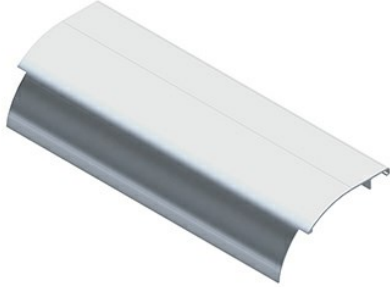

DROP OUT KIT

DO | [Cablofil](#)



FEATURES & BENEFITS

The aluminum I-beam design of ITray is perfect for industrial installations with large diameter cables in long span situations, minimizing total tray width and creating a smooth transition between straight sections and fittings. A structural offset in the sidewall creates strong, mid-span splices that need fewer supports. Each splice snaps in place and stays without holding. Additionally, only four bolts are needed for each splice reducing hardware needs by 50%. These features allow Itray to be installed up to 30% faster than standard tray.

- Material: Aluminum Alloy 5052 - H32
- Finish: Plain
- Width (W): Tray width: 6", 9", 12", 18", 24", 30", 36"
- Secure DO on rung as shown, rest notches on inside bottom siderail flange, secure using three self-drilling/tapping screws

SPECIFICATIONS

GENERAL INFO

Finish: Plain
Product Series: Itray
Type: Accessories

CONSTRUCTION INFORMATION

Material 1: Aluminum