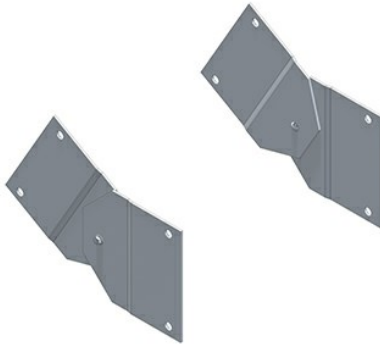

VERTICAL ADJUSTABLE SPLICE KIT

VASP | [Cablofil](#)



FEATURES & BENEFITS

The aluminum I-beam design of ITray is perfect for industrial installations with large diameter cables in long span situations, minimizing total tray width and creating a smooth transition between straight sections and fittings. A structural offset in the sidewall creates strong, mid-span splices that need fewer supports. Each splice snaps in place and stays without holding. Additionally, only four bolts are needed for each splice reducing hardware needs by 50%. These features allow Itray to be installed up to 30% faster than standard tray.

- Material: Aluminum Alloy 5052 - H32
- Finish: Plain
- Height (H): Tray height: 4", 5", 6", 7" (less 1/2")
- Torque: 19 - 25 ft-lbs

SPECIFICATIONS

GENERAL INFO

Finish: Plain
Product Series: Itray
Type: Splices

CONSTRUCTION INFORMATION

Material 1: Aluminum