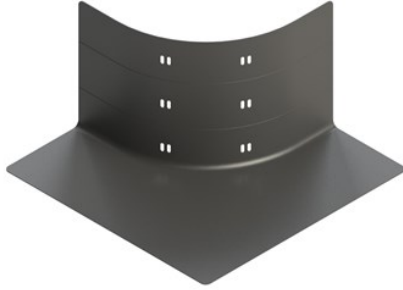


---

## RADT90 RADIUS SHIELD

RADT90RS | [Cablofil](#)



---

### FEATURES & BENEFITS

Radius shields create a smooth corner around junctions made with EZT90 and RADT90 hardware. They're made from durable, black ABS plastic and include slots for mounting with zip ties. Radius shield is available in one size — just trim to fit your installation tray depth.

- Protects any cable from rough edges at cable pathway junctions
- Sold in pairs
- One size fits CF54, ZF54, CF105 and CF150 tray heights – just trim to fit
- Zip ties for attachment are included
- Cablofil cable management exclusive

---

### SPECIFICATIONS

#### GENERAL INFO

Finish: Low Polish

#### CONSTRUCTION INFORMATION

Material 1: ABS

#### BUY AMERICAN ACT COMPLIANCE

Country Of Origin: UNITED STATES OF AMERICA

