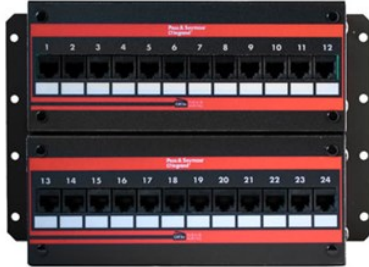


---

## CAT 5E 24-PORT WALL-MOUNT JACK PANEL WITH STAND-OFF LEGS

JP24845C5E | [On-Q](#)



---

### FEATURES & BENEFITS

This high-performance patch panel meets the TIA/EIA-568-B.2 standard for connecting hardware.

- 24-Port T568A/Universal Wiring.

---

### SPECIFICATIONS

#### GENERAL INFO

Cable Type: Cat 5e  
Color: Black  
Mod Jack Wiring: T568A/Universal Wiring  
Type: Wall-Mount Jack Panel  
Input Plug Type: RJ45 Male

#### LISTING AGENCIES/THIRD PARTY CERTIFICATIONS

UN SPSC: 43223309

#### DIMENSIONS

Depth (Metric): 7.8 cm  
Depth (US): 3.08"  
Height (Metric): 8.8 cm  
Height (US): 3.46"  
Width (Metric): 27.2 cm  
Width (US): 10.69 in

#### TECHNICAL INFORMATION

Receptacle Type: RJ45 Female Jack  
Number Of Receptacles: 12