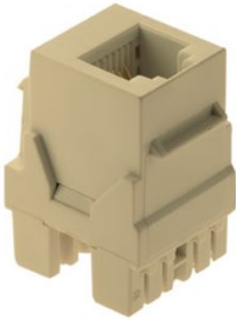

6P6C KEYSTONE CONNECTOR, IVORY

WP3425-IV | [On-Q](#)



FEATURES & BENEFITS

This high quality insert is for use in any Keystone wall plate.



- Vertical design for easy punchdown termination
- Rear retention caps ensure secure wire termination
- Formerly P&S Part # KS6UI

SPECIFICATIONS

GENERAL INFO

Color: Ivory
Termination: 6P6C
Connection Type: RJ25 Female
Type: Keystone Insert

LISTING AGENCIES/THIRD PARTY CERTIFICATIONS

RoHS: Yes
CSA Listing Info: CAN/CSA-C22.2 No. 182.4-1990
CSA Standard: Yes
UL Listing No: ANSI/UL 1863
UL Standard: Yes
UN SPSC: 39121704

DIMENSIONS

Depth (Metric): 2.8 cm
Depth (US): 1.10"
Length (Metric): 2.2 cm
Length (US): 0.87"

Width (Metric): 1.7 cm
Width (US): 0.67 in

TECHNICAL INFORMATION

Humidity: 93% Maximum Noncondensing
Material: High Impact Flame Retardant Plastic
Operating Temperature (Celsius): -10°C to 60°C
Product Fits Into: Keystone Cutout
Storage Temperature: -40°C to 70°C