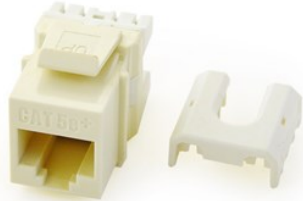

CAT 5E QUICK CONNECT RJ45 KEYSTONE INSERT, LIGHT ALMOND

WP3475-LA | [On-Q](#)



FEATURES & BENEFITS



- Easily terminate all four pairs using the Legrand Punch & Go Tool (AC3400)
- RJ45 Inserts can be terminated with any 110 punchdown tool
- Exceeds EIA/TIA 568A/B Cat 5e Performance Specifications
- Available in Black, Brown, White, Light Almond, Grey, Blue, Orange, Ivory and Red
- Contractor packs available in quantities of 50. To order, use part number WP3475-LA-50

SPECIFICATIONS

GENERAL INFO

Color: Light Almond
Termination: 8P8C
Connection Type: RJ45 Female
Type: Keystone Insert

ASSEMBLY/INSTALLATION INFORMATION

Installation Tips: Terminate with Punch & Go Tool (AC3400)

LISTING AGENCIES/THIRD PARTY CERTIFICATIONS

RoHS: Yes
CSA Listing Info: CAN/CSA-C22.2 No. 182.4-1990
CSA Standard: Yes
UL Listing No: ANSI/UL 1863
UL Standard: Yes
UN SPSC: 39121704

DIMENSIONS

Depth (Metric): 30 mm
Depth (US): 1.18"
Height (Metric): 22 mm
Height (US): .87"
Width (Metric): 16.9 mm
Width (US): .665 in

TECHNICAL INFORMATION

Cat5 Cable Rating: Cat5e
Humidity: 93% Maximum Noncondensing
Material: High Impact Flame Retardant Plastic
Operating Temperature (Celsius): -10°C to 60°C
Performance Rating: Meets TIA/EIA-568-B.2-1 Cat.6 Short Link requirements
Product Fits Into: Keystone Cutout
Storage Temperature: -40°C to 70°C