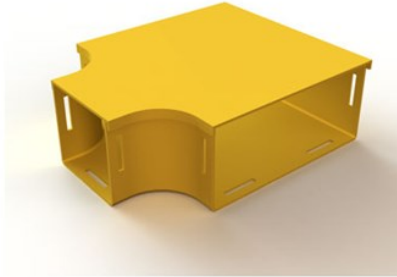

MIGHTY MO FIBER RACEWAY, HORIZONTAL TEE TRANSITION, WITH COVER, 12" TO 4", YELLOW

OR-MMFHTC12T4-Y | [Ortronics](#)



FEATURES & BENEFITS

Horizontal Tees are used to branch off the main route or provide a method of breaking into horizontal duct. Standard tees branch off at the same size as the through duct. Transition tees branch off to a smaller duct. They are available with and without covers.



- Made of Noryl fire retardant plastic:** Certified to UL94VO and Halogen free.
- Snap together slot and joiner system:** Stronger and quicker assembly of raceway and fittings.
- Raceway and fittings available in 5 sizes: A solution for any size and density of installation.
- Bend radius control in all fittings: Protects the performance of installed fiber.

SPECIFICATIONS

GENERAL INFO

Product Series: Mighty Mo
Type: Raceway Fittings

LISTING AGENCIES/THIRD PARTY CERTIFICATIONS

RoHS: Yes

CONSTRUCTION INFORMATION

Material 1: Noryl

DIMENSIONS

Height (US): 4"
Width (US): 12.00"