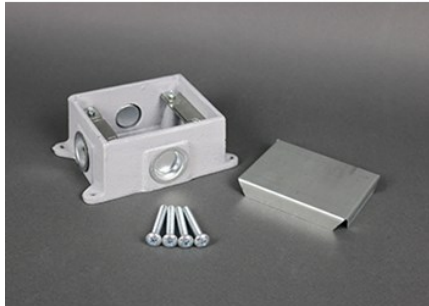


---

## 880CM1-1 - OMNIBOX SERIES SHALLOW CAST-IRON FLOOR BOX

880CM1-1 | [Wiremold](#)



---

### FEATURES & BENEFITS

The 880CM1 Omnibox Floor Box Series provides an excellent activation solution for applications where single service is required in open space areas. The 880CM1 floor box is offered in a durable cast iron construction, designed to be installed in on-grade concrete floor applications and to meet a wide range of market requirements.

This floor box series has many applications, some of which are schools, financial institutions, and commercial office buildings.



**PRODUCT**  
ENVIRONMENTAL PROFILE

- **TopGuard protection.** All cover assemblies for the Omnibox Floor Box Series have TopGuard protection. An integral design which keeps out water, dirt, and debris from the power and communication compartments.
- **Fully adjustable box.** Before and after concrete pour adjustability. Lower installed cost.
- **Watertight cast-iron construction.** Meets requirements for on grade or below grade application.
- Boxes and covers have been listed by Underwriters Laboratories Inc. to their standard UL514A, 514C, 514D, and Canadian standard C22.2
- **Flush activation assemblies for carpet and tile.** Aesthetically pleasing assemblies are interchangeable for both cast-iron and stamped steel.
- **Datacom connectivity options.** Accepts industry standard and proprietary devices from a wide range of manufacturers to provide a seamless and aesthetically pleasing interface for voice, data, audio, and video applications at the point-of-use. A wide selection of data and bezel options available for use with Ortronics TracJack and Series II devices.
- This product meets the material restrictions of RoHS.

---

### SPECIFICATIONS

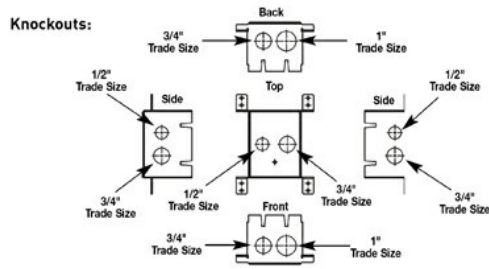
**Conduit Openings:** (4)-1" [25mm]

**Compartment Capacity:** 34 cu in. [557ml<sup>3</sup>]

**Adjustment Before Pour:** 1 3/4" [44mm]

Adjustment After Pour: 1/2" [12.7mm]

**Knockout Sizes & Locations:**



**GENERAL INFO**

Product Series: Omnibox

Component Type: Boxes

Knockout Size: 1"

**LISTING AGENCIES/THIRD PARTY CERTIFICATIONS**

RoHS: Yes

**CONSTRUCTION INFORMATION**

Installation Location: On-Grade

**BUY AMERICAN ACT COMPLIANCE**

Country Of Origin: MULTIPLE

Buy American Act Status: Exception

Note: While most parts within this series comply with the BAA's Country of Origin requirements, some do not. For a complete list of all parts and their respective Country of Origin, refer to the "Series Part List-COO" under "Supporting Documents" on the "Resources" tab.