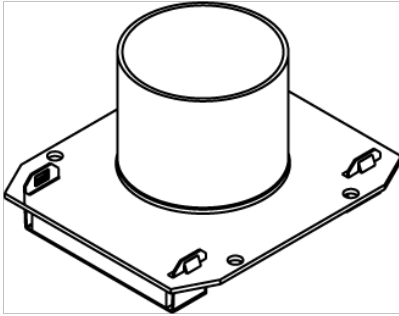

EVOLUTION 8AT SERIES BOTTOM HOUSING ASSEMBLY

22CHA | [Wiremold](#)



FEATURES & BENEFITS

Two-gang 2" trade size conduit housing assembly. Used on 8AT Series devices. Covers two (2) of the three (3) gangs in the center compartment. Only for use with 8AT Series units.



PRODUCT
ENVIRONMENTAL PROFILE

- This product meets the material restrictions of RoHS

SPECIFICATIONS

GENERAL INFO

Product Series: Evolution
Type: Multi-Service
Component Type: Stem Assemblies

LISTING AGENCIES/THIRD PARTY CERTIFICATIONS

RoHS: Yes

DIMENSIONS

Hole Size: 8"

BUY AMERICAN ACT COMPLIANCE

Country Of Origin: UNITED STATES OF AMERICA
Buy American Act Status: Buy American Act Compliant

