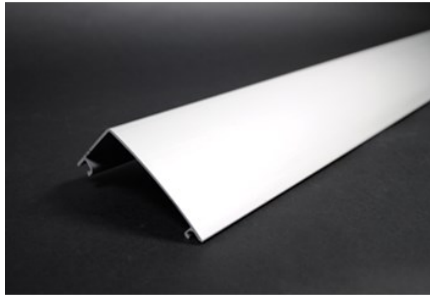

ALDS4000 RACEWAY COVER

ALDS4000C | [Wiremold](#)



FEATURES & BENEFITS

.060" (1.52mm) satin anodized finish. Packed eight 5' (1.5m) lengths per carton. Two covers per base.



- This product meets the material restrictions of RoHS

SPECIFICATIONS

GENERAL INFO

Product Series: ALDS4000

Component Type: Raceway Base & Cover

LISTING AGENCIES/THIRD PARTY CERTIFICATIONS

RoHS: Yes

TECHNICAL INFORMATION

Material: Aluminum

Capacity: Dual-Channel