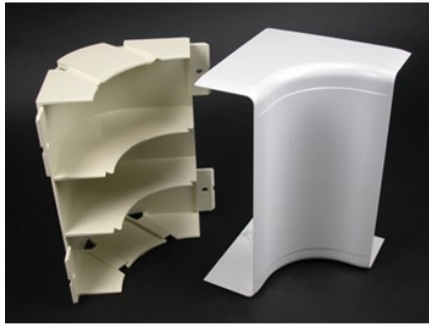




5500 BEND RADIUS FULL CAPACITY INTERNAL ELBOW FITTING

5517FO | [Wiremold](#)



FEATURES & BENEFITS

90 degree internal corner, with integral dividers, that provides a 2" (51mm) cable bend radius for UTP and fiber optic installations. Ideal for lay-in or pull-through installations.



PRODUCT
ENVIRONMENTAL PROFILE

- This product meets the material restrictions of RoHS

SPECIFICATIONS

GENERAL INFO

Available Colors:

5517FO- Ivory

5517FO-WH - White

Product Series: 5500

Component Type: Fittings & Accessories

LISTING AGENCIES/THIRD PARTY CERTIFICATIONS

RoHS: Yes

TECHNICAL INFORMATION

Material: Nonmetallic

Capacity: Multiple Channel