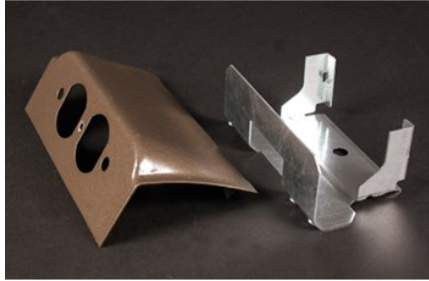


---

## DS4000 DOWNWARD DUPLEX DEVICE PLATE FITTING



DSDWND | [Wiremold](#)

---

### FEATURES & BENEFITS

Installs 15A and 20A duplex receptacles or 106 style data frames into DS4000 Series Raceway in a downward facing, protected position.



- This product meets the material restrictions of RoHS

---

### SPECIFICATIONS

#### GENERAL INFO

Available Colors:

DSDWND-DV - Fog White

DSDWND-DG - Designer Gray

DSDWND-BK- Matte Black

DSDWND-BZ - Designer Bronze

Product Series: DS4000

Component Type: Brackets & Plates

#### LISTING AGENCIES/THIRD PARTY CERTIFICATIONS

RoHS: Yes

#### TECHNICAL INFORMATION

Material: Steel

Capacity: Multiple Channel