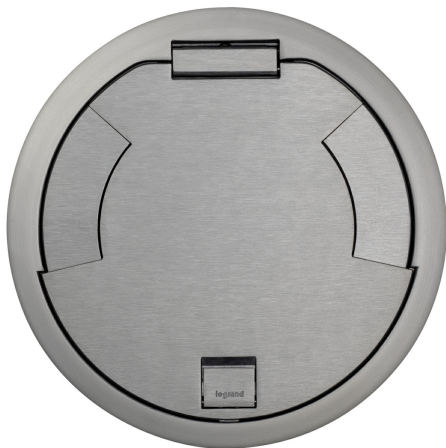




Wiremold
Evolution 10CTC Surface Style Cover Assembly
Part No. 10CTCAA



Proof that bigger and better go hand in hand: Evolution Series 10" Poke-Thru Devices offer more capacity, flexibility and versatility than any other poke-thru device on the market. In offices, hospitals, government buildings, schools and universities – in all of the spaces where we live and work – clients are demanding more: more communications, more A/V and more power. Featuring eight-gangs of capacity, redesigned and easier to use covers, recessed connections below floor level, and enough internal wiring capacity to eliminate the need for a junction box – Evolution Series 10" Poke-Thru Devices are ready to meet that increased demand.

Features & Benefits

Die-cast aluminum cover assembly

Cover assembly is available in the following powder coat finishes: black (BK), gray (GY), nickel (NK), brass (BS), bronze (BZ) and aluminum (AL) as well as plated brass (PB) and satin chrome (SC)

10CTC Series Cover Assemblies designed for use with 10STC and 10STCP Poke-Thru Stem Assemblies

Specifications

General Info

Product Line	Wiremold	Color	Aluminum
UPC Number	786564105930	Country Of Origin	India
Cover Style	Surface	Application Sector	Commercial, Education, Healthcare, Hospitality
Standard	cULus Listed, NEC	Warranty Type	1-Year from Installation or 2-Years from Day of Sale
Type	Cover		

Dimensions

Product Weight US 5.023 lb

Listing Agencies / 3rd Party Agencies

cULus Listed	Yes
--------------	-----

Technical Information

Floor Type	Carpet, Polished Concrete, Terrazzo, Tile, Wood
------------	--
