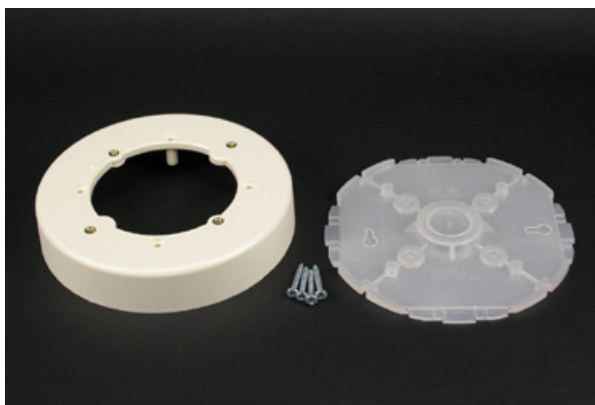




Wiremold  
400/800/2300/2300D Fixture Box Fitting  
Part No. 2338A-WH



For hanging fixtures, smoke/fire alarms and other security devices with 3 1/2" (89mm) or 4 1/16" (103mm) mounting centers. Has 1/2" trade size KO. Not for use with fans.

## Features & Benefits

For hanging fixtures, smoke/fire alarms and other security devices with 3 1/2" (89mm) or 4 1/16" (103mm) mounting centers. Has 1/2" trade size KO. Not for use with fans.

## Specifications

### General Info

Product Line	Wiremold	UPC Number	786776523522
Country Of Origin	United States	Application Sector	Commercial, Residential
Standard	cULus Listed Raceway: File E90378 Guide RJTX. Complies with flammability requirements of UL-5A. Fittings: File E90377 Guide RJYT. Meets Article 388 of NEC. UL Listed for up to 600V. Meets Section 12-2600 of CEC.	Type	Raceway

### Dimensions

Product Width US	5.5 in	Product Weight US	0.36 lb
Product Depth US	1.0 in		

### Listing Agencies / 3rd Party Agencies

cULus ListingNumber	E90377	cULus Listed	Yes
---------------------	--------	--------------	-----

### Additional Information

RoHS Compliant

Yes

Product Environmental Profile    Yes

Technical Information

Voltage

600.0 V