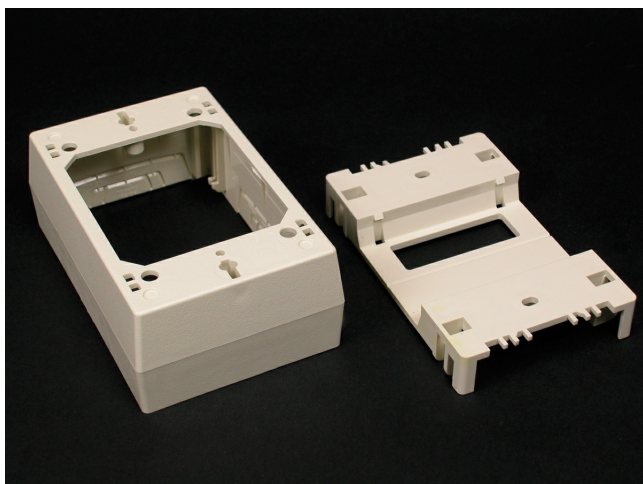




Wiremold  
400/800/2300/2300D Extra Deep Device Box Fitting  
Part No. 2348D-WH



For use with 2300D Series Divided Raceway. For mounting standard switches, receptacles, and industry standard faceplates for communication devices.

## Features & Benefits

For use with 2300D Series Divided Raceway. For mounting standard switches, receptacles, and industry standard faceplates for communication devices.

## Specifications

### General Info

Product Line	Wiremold	UPC Number	786776537086
Country Of Origin	United States	Application Sector	Commercial, Residential
Standard	cULus Listed Raceway: File E90378 Guide RJTX. Complies with flammability requirements of UL-5A. Fittings: File E90377 Guide RJYT. Meets Article 388 of NEC. UL Listed for up to 600V. Meets Section 12-2600 of CEC.	Type	Raceway

### Dimensions

Product Width US	3.0 in	Product Weight US	0.33 lb
Product Depth US	1.75 in	Product Length US	4.75 in

### Listing Agencies / 3rd Party Agencies

cULus ListingNumber	E90377	cULus Listed	Yes
---------------------	--------	--------------	-----

---

Additional Information

---

RoHS Compliant	Yes	Product Environmental Profile	Yes
----------------	-----	-------------------------------	-----

---

Technical Information

---

Voltage	600.0 V
---------	---------

---