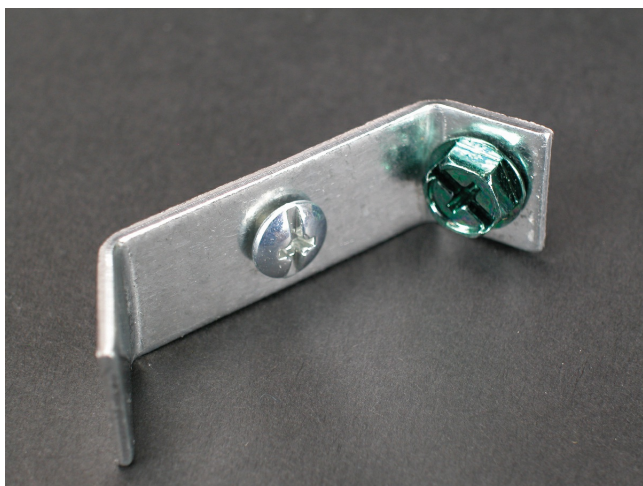




Wiremold
2400 Ground Clamp Fitting
Part No. 2409



Connects equipment grounding conductor to provide ground to 2400 Series Raceway. No. 10 ground screw provided.

Features & Benefits

Connects equipment grounding conductor to provide ground to 2400 Series Raceway. No. 10 ground screw provided.

Specifications

General Info

Product Line	Wiremold	Color	Silver
UPC Number	786776516043	Country Of Origin	United States
Standard	cULus Listed Raceway: FileE4376 Guide RJBT. Fittings: File E41751 Guide RJPR. Base & Blank Cover: Meets Article 386 of NEC. Meets Section 12-600 of CEC.	Type	Raceway

Dimensions

Product Width US	0.5 in	Product Weight US	0.05 lb
------------------	--------	-------------------	---------

Listing Agencies / 3rd Party Agencies

cULus ListingNumber	E41751	cULus Listed	Yes
---------------------	--------	--------------	-----

Additional Information

RoHS Compliant	Yes	Product Environmental Profile	Yes
----------------	-----	-------------------------------	-----

Technical Information

Voltage	600.0 V
---------	---------
