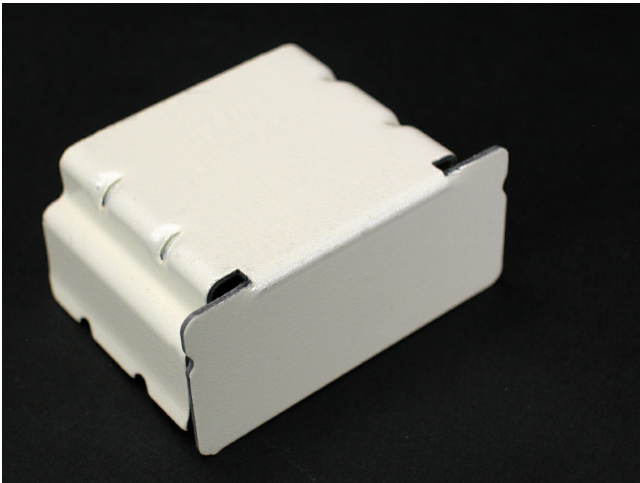




Wiremold
2400D Divided Blank End Fitting
Part No. 2410BD-FW



Closes off open end of 2400D Series Raceway.

Features & Benefits

Closes off open end of 2400D Series Raceway.

Specifications

General Info

Product Line	Wiremold	UPC Number	786776189278
Country Of Origin	United States	Application Sector	Residential/Commercial
Standard	cULus Listed Raceway: FileE4376 Guide RJBT. Fittings: File E41751 Guide RJPR. Base & Blank Cover: Meets Article 386 of NEC. Meets Section 12-600 of CEC.	Type	Raceway

Dimensions

Product Width US 1.188 in

Listing Agencies / 3rd Party Agencies

cULus ListingNumber E41751 cULus Listed Yes

Additional Information

RoHS Conformant Yes Product Environmental Profile Yes

Technical Information

Voltage	600.0 V
---------	---------
