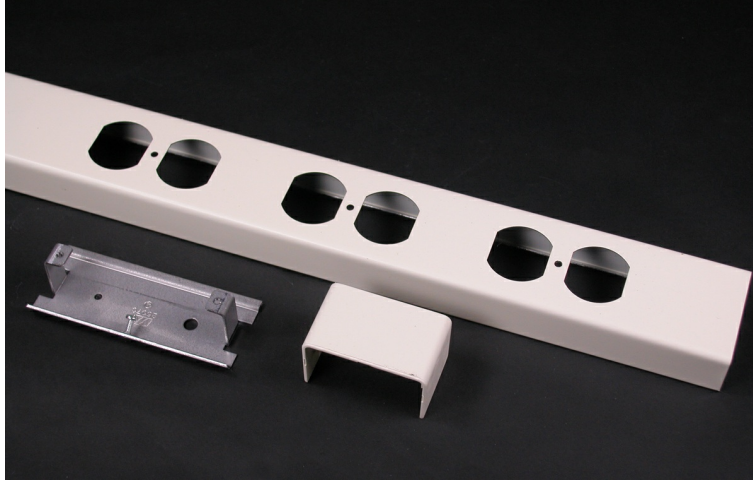




Wiremold
25DTP Series Steel Tele-Power Pole Cover
Part No. 25DTP-B



Routing power, data, and A/V – neatly and simply – from up there to down here; that’s what Tele-Power® Poles are all about. Their sole purpose is to get the business end of your wire and cabling needs down to your workstation, equipment, or modular furniture. Specifically, in away-from-the-wall locations in open commercial office areas, schools, labs, stores and other sites. Whatever power, data, or A/V wiring you need to bring down to the desk, workstation, or cash registers, Wiremold Tele-Power Poles handle all of your needs effortlessly. For modular office furniture – our poles easily provide the hook up to feed office partitions. The poles are also available with specialized electrical circuits such as dedicated/isolated ground. Vertical drop poles give you the flexibility and capacity to devote both sides of the pole for single or dual service feeds. Legrand/Wiremold offers the broadest selection of open space solutions. With standard, custom and configurable products, you can rest assured that the right solution is readily available and adaptable to your current and future work environments.

Features & Benefits

Add power receptacles or devices to existing modular Tele-Power Poles. Includes one receptacle mounting bracket.

Specifications

General Info

Product Line	Wiremold	UPC Number	786776046519
Country Of Origin	United States	Standard	cULus Listed Multioutlet Assemblies: File E15191 E178348 Guide PVGT, Raceway Fittings: File E41751 Guide RJPR, Accessories: File E53857 Guide RVUR Meets Article 380 & 386 of NEC

Dimensions

Product Width US	2.25 in	Product Height US	28.0 in
------------------	---------	-------------------	---------

Listing Agencies / 3rd Party Agencies

cULus ListingNumber	E53857	cULus Listed	Yes
---------------------	--------	--------------	-----

Buy American Act Compliance

NAFTA	Yes
-------	-----

Additional Information

RoHS Conformant	Yes	Product Environmental Profile	Yes
-----------------	-----	-------------------------------	-----