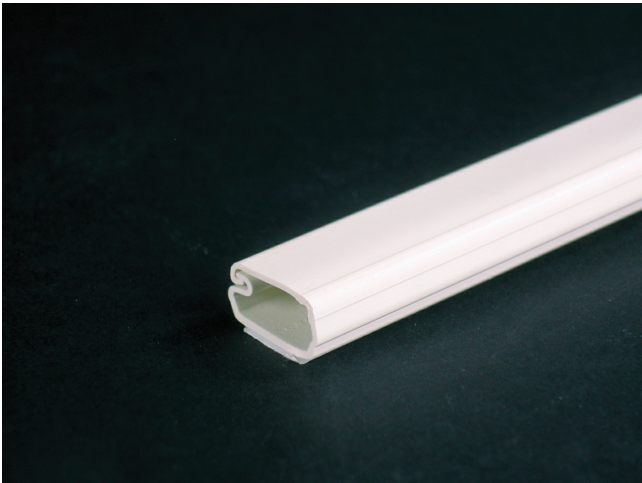




Wiremold  
Uniduct 2700 Series One-Piece Latching Raceway Fitting  
Part No. 2700-WH



Co-extruded design, smooth plastic finish with adhesive backing. Available in 6' (1.8m) lengths, packed 120' (36.6m) per carton. 2700 Series.

Features & Benefits

Co-extruded design, smooth plastic finish with adhesive backing. Available in 6' (1.8m) lengths, packed 120' (36.6m) per carton. 2700 Series.

Specifications

General Info

Product Line	Wiremold	UPC Number	786776548693
Country Of Origin	United States	Application Sector	Commercial, Residential
Standard	Uniduct Series Raceway is not UL Listed and is only designed for use in protecting electrical cords and low voltage wiring and cabling.	Type	Raceway

Dimensions

Product Weight US	0.067 lb	Product Height US	0.375 in
Product Length US	0.75 in		

Additional Information

RoHS Compliant	Yes	Product Environmental Profile	Yes
----------------	-----	-------------------------------	-----