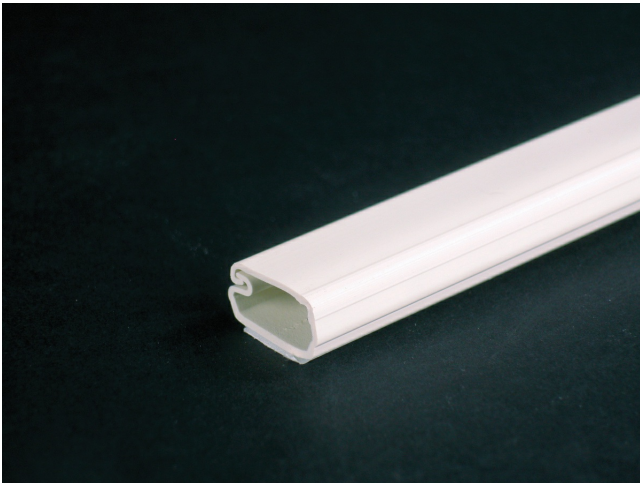




Wiremold  
Uniduct 2700 Series One-Piece Latching Raceway Fitting  
Part No. 2700L8-WH



2700 Series Co-extruded design, smooth plastic finish with adhesive backing. Available in 8' (2.44m) lengths, packed 160' (48.8m) per carton.

## Features & Benefits

2700 Series Co-extruded design, smooth plastic finish with adhesive backing. Available in 8' (2.44m) lengths, packed 160' (48.8m) per carton.

## Specifications

### General Info

|                   |   |                    |                        |
|-------------------|---|--------------------|------------------------|
| Product Line      | Wiremold  | UPC Number         | 786776521689           |
| Country Of Origin | United States   | Application Sector | Residential/Commercial |
| Standard          | Uniduct Series Raceway is not UL Listed and is only designed for use in protecting electrical cords and low voltage wiring and cabling. | Type               | Raceway                |

### Dimensions

|                   |          |                   |         |
|-------------------|----------|-------------------|---------|
| Product Height US | 0.375 in | Product Length US | 0.75 in |
|-------------------|----------|-------------------|---------|

### Buy American Act Compliance

|       |     |
|-------|-----|
| NAFTA | Yes |
|-------|-----|

### Additional Information

|                 |     |                               |     |
|-----------------|-----|-------------------------------|-----|
| RoHS Conformant | Yes | Product Environmental Profile | Yes |
|-----------------|-----|-------------------------------|-----|