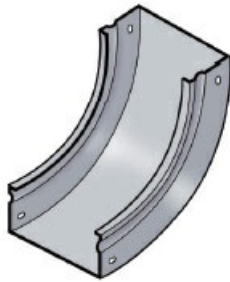




Cablofil
FIBER TROUGH - PREGALV VERT IN 2x4
Part No. 340980



Cablofil Fiber Trough utilizes high strength steel components to provide the strength and durability required to manage fiber cabling requirements in the most demanding data center environments.

Features & Benefits

Strong corrosion-resistant steel.

Tool-less, snap on design.

18 gage steel.

Specifications

General Info

Product Line	Cablofil	Finish	Pre-Galvanized
--------------	----------	--------	----------------

Country Of Origin	Italy
-------------------	-------

Dimensions

Product Weight US	1.08 lb
-------------------	---------

Buy American Act Compliance

BAA	Yes
-----	-----