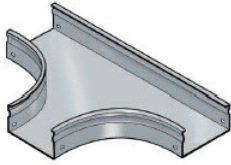




Cablofil  
FIBER TROUGH - PREGALV TEE 4x12  
Part No. 341122

Cablofil Fiber Trough utilizes high strength steel components to provide the strength and durability required to manage fiber cabling requirements in the most demanding data center environments.



## Features & Benefits

Strong corrosion-resistant steel.

Rolled edge: for cable protection.

Tool-less, snap on design.

18 gage steel.

## Specifications

### General Info

Product Line	Cablofil	Finish	Pre-Galvanized
Country Of Origin	Italy		

### Dimensions

Product Width US	16.9 in	Product Weight US	9.8 lb
Product Volume US	0.839 cu ft	Product Depth US	22.0 in
Product Height US	3.9 in		

### Trade Programs

BAA	Yes
-----	-----