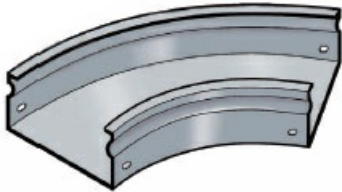




Cablofil
FTFB45100/600PG - FiberTrough 45 Deg Bnd
Part No. 350512



Cablofil Fiber Trough utilizes high strength steel components to provide the strength and durability required to manage fiber cabling requirements in the most demanding data center environments.

Features & Benefits

- Strong, corrosion resistant steel construction.
- Unique design: allows covers to snap on.
- Rolled edge: for cable protection.
- 18 gage steel.

Specifications

General Info

Product Line	Cablofil	Finish	Pre-Galvanized
Country Of Origin	Italy		

Dimensions

Product Weight US	5.51 lb
-------------------	---------

Buy American Act Compliance

BAA	Yes
-----	-----