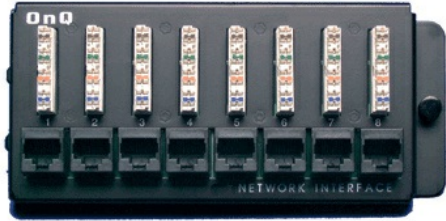


Cat 5e rated module supports termination of up to eight On-Q Cat 5e cables for interconnection to a local area network or digital data services. Provides a termination point for telephone cable runs when using the 1x8 Enhanced Telecom Module and the 8-



Features & Benefits

High-speed Cat 5e termination point for digital data services

RJ45 jumpers sold separately

Provides connectivity for computers for a local area network (LAN)

RJ45 8-pin modular jacks provide for time-saving termination and hassle-free connection changes

High-quality Cat 5e termination using 110-style punchdown to RJ45 modular jacks

Specifications

General Info

Product Line	On-Q	UPC Number	804428000655
Country Of Origin	China	Application Sector	Residential
Standard	UL, RoHS		

Technical Information

Connector	RJ45 Cat 5e to 110 IDC	Number of Ports	8
Single/Multimode	Non-applicable		