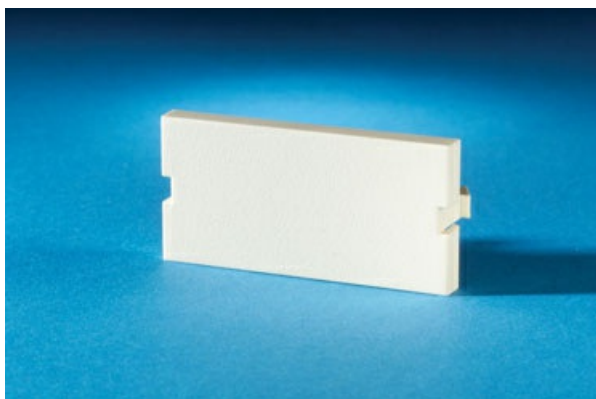




Ortronics
SERIES II BLANK MODULE, 1U, WM IVORY
Part No. 40300164-99



Series II Blank Modules occupy one unit of plate or housing space until required by future applications. Series II is a family of front removable snap-in modules that make moves, adds and changes easy and time saving. The rugged high strength construction of Series II makes it one of Ortronics most popular workstation choices

Features & Benefits

Occupies 1 unit of space: holds space for future expansion

Specifications

General Info

Product Line	Wiremold	Country Of Origin	Taiwan, Province Of China
--------------	----------	-------------------	---------------------------

Dimensions

Product Weight US	0.55 lb
-------------------	---------
