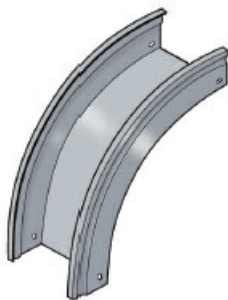




Cablofil  
New FTVO9050/300PG - Trough Vert Out  
Part No. 481042



Cablofil Fiber Trough utilizes high strength steel components to provide the strength and durability required to manage fiber cabling requirements in the most demanding data center environments.

## Features & Benefits

Built in offset for connecting without separate splice plates.

Strong corrosion resistant steel construction.

## Specifications

### General Info

Product Line	Cablofil	Finish	Pre-Galvanized
UPC Number	800388241244	Country Of Origin	Italy

### Dimensions

Product Weight US	2.116 lb
-------------------	----------