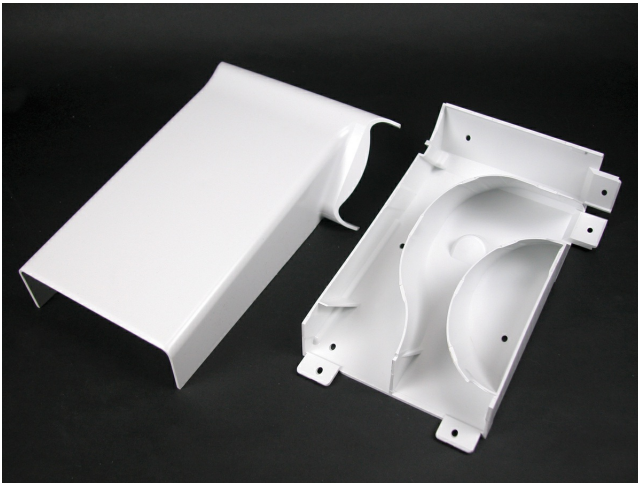




Wiremold
5400 Transition Fitting
Part No. 5408R-WH



For transitioning from MXN2A08 Corner Drop to a horizontal run of 5400TB Series Raceway to the right.

Features & Benefits

For transitioning from MXN2A08 Corner Drop to a horizontal run of 5400TB Series Raceway to the right.

Specifications

General Info

Product Line	Wiremold	UPC Number	786776057270
Country Of Origin	United States	Application Sector	Commercial, Residential

Standard	cULus Listed Raceway: File E90378 Guide RJTX. Complies with flammability requirements of UL-5A. Fittings: File E90377 Guide RJYT. Meets Article 388 of NEC. UL Listed for up to 600V. Meets Section 12-1600 of CEC.	Type	Raceway
----------	---	------	---------

Dimensions

Product Width US	6.8 in	Product Weight US	1.2 lb
Product Height US	1.8 in	Product Length US	10.0 in

Listing Agencies / 3rd Party Agencies

cULus ListingNumber	E90377	cULus Listed	Yes
---------------------	--------	--------------	-----

Additional Information

RoHS Compliant

Yes

Product Environmental Profile Yes

Technical Information

Voltage

600.0 V
