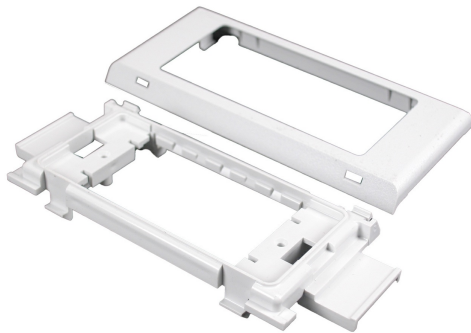




Wiremold
5400Twin Snap Device Bracket Fitting
Part No. 5450T



For power or communication devices in a single compartment. For use with 5507 Series Faceplates, Ortronics TracJack and Series II Modules, Pass and Seymour Activate Series Inserts, and Wiremold Open System Communication Modules. NOTE: CM-EPLA End Plates are required when using Wiremold communication modules and Pass and Seymour Activate inserts. S2-EPL End Plates are required when using Orthonics Series II Inserts. To mount TracJack inserts, use 5507-4TJ or 5507-6TJ Faceplates.

Features & Benefits

For power or communication devices in a single compartment. For use with 5507 Series Faceplates, Ortronics TracJack and Series II Modules, Pass and Seymour Activate Series Inserts, and Wiremold Open System Communication Modules. NOTE: CM-EPLA End Plates are required when using Wiremold communication modules and Pass and Seymour Activate inserts. S2-EPL End Plates are required when using Orthonics Series II Inserts. To mount TracJack inserts, use 5507-4TJ or 5507-6TJ Faceplates.

Specifications

General Info

Product Line	Wiremold	UPC Number	786776059137
Country Of Origin	United States	Application Sector	Residential/Commercial
Standard	cULus Listed Raceway: File E90378 Guide RJTX. Complies with flammability requirements of UL-5A. Fittings: File E90377 Guide RJYT. Meets Article 388 of NEC. UL Listed for up to 600V. Meets Section 12-1600 of CEC.	Type	Raceway

Dimensions

Product Width US	2.5 in	Product Length US	4.875 in
------------------	--------	-------------------	----------

Listing Agencies / 3rd Party Agencies

cULus ListingNumber	E90377	cULus Listed	Yes
---------------------	--------	--------------	-----

Buy American Act Compliance

NAFTA	Yes
-------	-----

Additional Information

RoHS Conformant	Yes	Product Environmental Profile	Yes
-----------------	-----	-------------------------------	-----

Technical Information

Voltage	600.0 V
---------	---------
