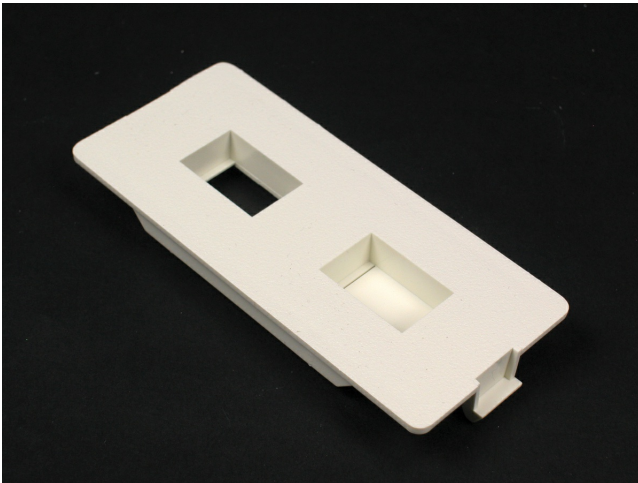




Wiremold  
5500 Flush Dual RJ Connector Faceplate Fitting  
Part No. 5507FRJ-GY



For mounting one or two keystone device modules, recessed to provide a flush installation. Has one opening and one KO.

## Features & Benefits

For mounting one or two keystone device modules, recessed to provide a flush installation. Has one opening and one KO.

## Specifications

### General Info

Product Line	Wiremold	UPC Number	786776524772
Country Of Origin	United States	Application Sector	Residential/Commercial

Standard	cULus Listed Raceway: File E90378 Guide RJTX. Complies with flammability requirements of UL-5A. Fittings: File E90377 Guide RJYT. Meets Article 388 of NEC. UL Listed for up to 600V. Meets Section 12-1600 of CEC.	Type	Raceway
----------	---	------	---------

### Listing Agencies / 3rd Party Agencies

cULus ListingNumber	E90377	cULus Listed	Yes
---------------------	--------	--------------	-----

### Buy American Act Compliance

NAFTA	Yes
-------	-----

### Additional Information

---

RoHS Conformant      Yes

Product Environmental Profile      Yes

---

### Technical Information

---

Voltage                      600.0 V

---