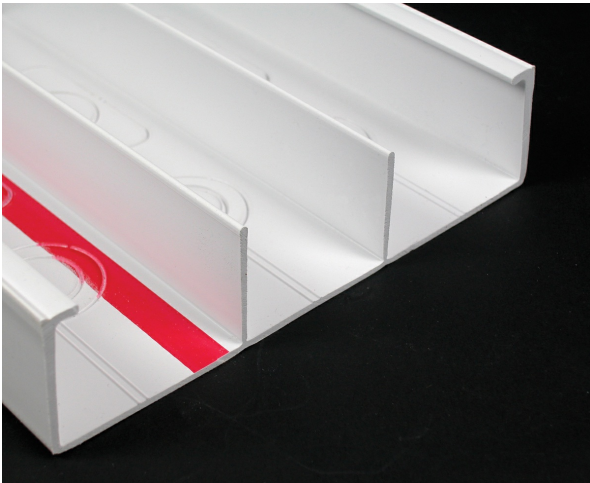




Wiremold  
5500 Backfeed Connector Fitting  
Part No. 5514A



Use when a backfeed is needed. Has three rectangular KOs for use with existing wall box and three 1/2", 3/4", and 1" diameter trade size KOs.

## Features & Benefits

Use when a backfeed is needed. Has three rectangular KOs for use with existing wall box and three 1/2", 3/4", and 1" diameter trade size KOs.

## Specifications

### General Info

Product Line	Wiremold	UPC Number	786776036503
Country Of Origin	United States	Application Sector	Commercial, Residential
Standard	cULus Listed Raceway: File E90378 Guide RJTX. Complies with flammability requirements of UL-5A. Fittings: File E90377 Guide RJYT. Meets Article 388 of NEC. UL Listed for up to 600V. Meets Section 12-1600 of CEC.	Type	Raceway

### Dimensions

Product Weight US	0.857 lb	Product Height US	6.687 in
Product Length US	8.0 in		

### Listing Agencies / 3rd Party Agencies

cULus ListingNumber	E90377	cULus Listed	Yes
---------------------	--------	--------------	-----

---

Additional Information

---

RoHS Compliant	Yes	Product Environmental Profile	Yes
----------------	-----	-------------------------------	-----

---

Technical Information

---

Voltage	600.0 V
---------	---------

---