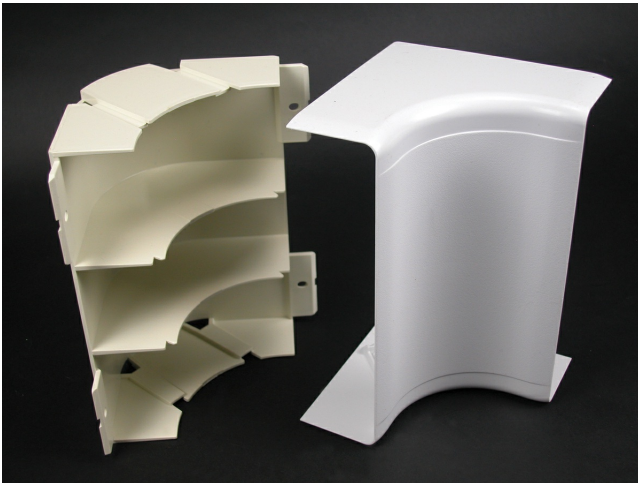




Wiremold
5500 Bend Radius Full Capacity Internal Elbow Fitting
Part No. 5517FO-WH



90 degree internal corner, with integral dividers, that provides a 2" (51mm) cable bend radius for UTP and fiber optic installations. Ideal for lay-in or pull-through installations.

Features & Benefits

90 degree internal corner, with integral dividers, that provides a 2" (51mm) cable bend radius for UTP and fiber optic installations. Ideal for lay-in or pull-through installations.

Specifications

General Info

Product Line	Wiremold	UPC Number	786776541014
Country Of Origin	United States	Application Sector	Residential/Commercial

Standard	cULus Listed Raceway: File E90378 Guide RJTX. Complies with flammability requirements of UL-5A. Fittings: File E90377 Guide RJYT. Meets Article 388 of NEC. UL Listed for up to 600V. Meets Section 12-1600 of CEC.	Type	Raceway
----------	---	------	---------

Dimensions

Product Depth US	1.812 in	Product Height US	6.875 in
Product Length US	4.5 in		

Listing Agencies / 3rd Party Agencies

cULus ListingNumber	E90377	cULus Listed	Yes
---------------------	--------	--------------	-----

Buy American Act Compliance

NAFTA Yes

Additional Information

RoHS Conformant Yes Product Environmental Profile Yes

Technical Information

Voltage 600.0 V
