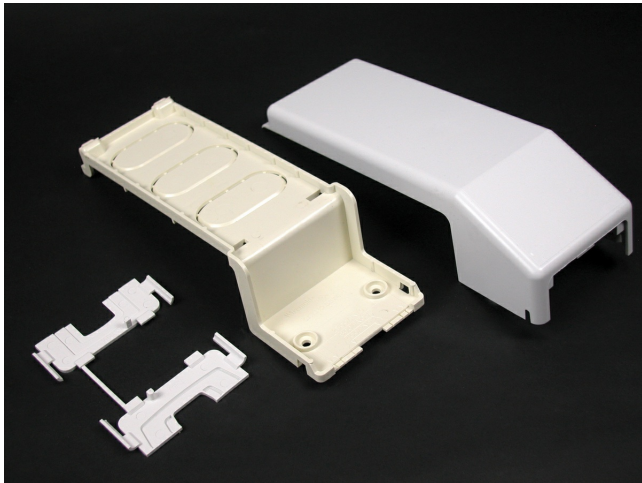




Wiremold
5500 Transition Fitting
Part No. 5574-WH



Makes transition from 5500 Series Raceway to the 400, 800, 2300, PN03, PN05, and PN10 Series Raceways.

Features & Benefits

Makes transition from 5500 Series Raceway to the 400, 800, 2300, PN03, PN05, and PN10 Series Raceways.

Specifications

General Info

Product Line	Wiremold	UPC Number	786776519075
Country Of Origin	United States	Application Sector	Commercial, Residential
Standard	cULus Listed Raceway: File E90378 Guide RJTX. Complies with flammability requirements of UL-5A. Fittings: File E90377 Guide RJYT. Meets Article 388 of NEC. UL Listed for up to 600V. Meets Section 12-1600 of CEC.	Type	Raceway

Dimensions

Product Width US	3.187 in	Product Weight US	0.75 lb
Product Height US	9.0 in	Product Length US	2.375 in

Listing Agencies / 3rd Party Agencies

cULus ListingNumber	E90377	cULus Listed	Yes
---------------------	--------	--------------	-----

Additional Information

RoHS Compliant	Yes
----------------	-----

Technical Information

Voltage	600.0 V
---------	---------
