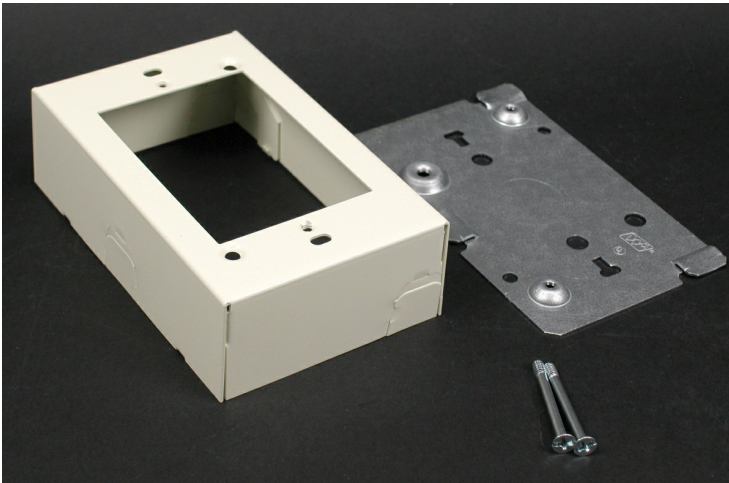




Wiremold
500/700 Switch and Receptacle Box Fitting
Part No. 5741WH



For shallow type switches (three-way, single, and double pole) and receptacles, including three-wire HICKing receptacles and single-gang combination devices. Base has 1/2" trade size Kos. Position of twistouts on ends permits running raceways close to interior trim. Accepts NEMA single-gang standard faceplates. NOTE: Certified to Canadian Safety Standards for sale in Canada. When ordering these products, change the "V" color prefix to "vc" or the "WH" color suffix to "WHC" to denote the Canadian versions.

Features & Benefits

For shallow type switches (three-way, single, and double pole) and receptacles, including three-wire HICKing receptacles and single-gang combination devices. Base has 1/2" trade size Kos. Position of twistouts on ends permits running raceways close to interior trim. Accepts NEMA single-gang standard faceplates. NOTE: Certified to Canadian Safety Standards for sale in Canada. When ordering these products, change the "V" color prefix to "vc" or the "WH" color suffix to "WHC" to denote the Canadian versions.

Specifications

General Info

Product Line	Wiremold	UPC Number	786776562903
Country Of Origin	United States	Application Sector	Residential/Commercial
Standard	cULus Listed Raceway: File E4376 Guide RJBT. Fittings: File E4751 Guide RJPR. Meets Article 386 of NEC. Meets Section 12-1600 of CEC.	Type	Raceway

Dimensions

Product Width US	4.625 in	Product Depth US	1.375 in
Product Length US	2.812 in		

Buy American Act Compliance

NAFTA	Yes
-------	-----

Additional Information

RoHS Conformant Yes

Product Environmental Profile Yes

Technical Information

Voltage 600.0 V
