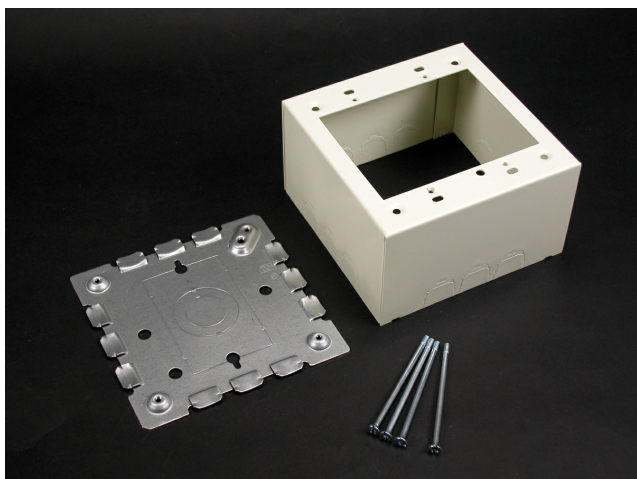




Wiremold
500/700 Two-Gang Extra Deep Switch and Receptacle Box Fitting
Part No. 5744-2WH



For deep devices such as momentary contact, remote control switches, and hospital signaling system devices. Base has 1/2" trade size KOs. Larger gang boxes available by special order. Two-gang: 4 3/4" L x 4 3/4" W (121mm x 121mm). Accepts NEMA double-gang standard faceplates. NOTE: Certified to Canadian Safety Standards for sale in Canada. When ordering these products, change the "V" color prefix to "vc" or the "WH" color suffix to "WHC" to denote the Canadian versions.

Features & Benefits

For deep devices such as momentary contact, remote control switches, and hospital signaling system devices. Base has 1/2" trade size KOs. Larger gang boxes available by special order. Two-gang: 4 3/4" L x 4 3/4" W (121mm x 121mm).

Accepts NEMA double-gang standard faceplates. NOTE: Certified to Canadian Safety Standards for sale in Canada. When ordering these products, change the "V" color prefix to "vc" or the "WH" color suffix to "WHC" to denote the Canadian versions.

Specifications

General Info

Product Line	Wiremold	Color	White
UPC Number	786776562927	Country Of Origin	United States
Application Sector	Commercial, Residential	Standard	cULus Listed Raceway: File E4376 Guide RJBT. Fittings: File E4751 Guide RJPR. Meets Article 386 of NEC. Meets Section 12-1600 of CEC.
Type	Raceway		

Dimensions

Product Width US	4.75 in	Product Weight US	1.06 lb
Product Depth US	2.75 in	Product Length US	4.75 in

Additional Information

RoHS Compliant	Yes	Product Environmental Profile	Yes
----------------	-----	-------------------------------	-----

Technical Information

Voltage	600.0 V
---------	---------