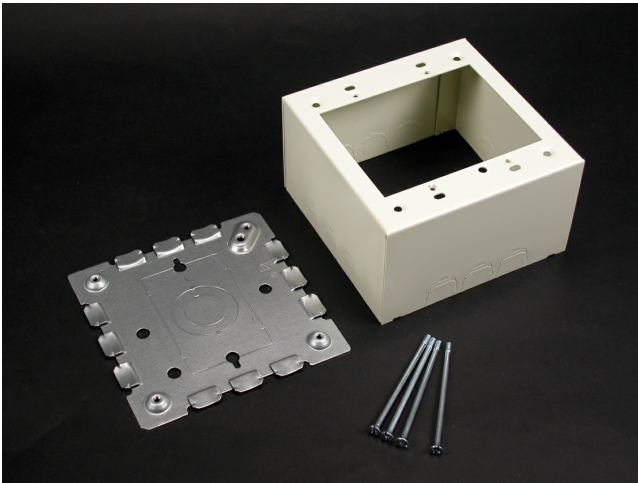




Wiremold
500/700 Two-Gang Deep Switch and Receptacle Box Fitting
Part No. 5744S-2WHC



Designed especially for use in the installation of signal system and alarm wiring. Base has 1/2" trade size KOs. Larger gang boxes available by special order. Two-gang: 4 3/4" L x 4 3/4" W (121mm x 121mm). Accepts NEMA double-gang standard faceplates. NOTE: Certified to Canadian Safety Standards for sale in Canada. When ordering these products, change the "V" color prefix to "vc" or the "WH" color suffix to "WHC" to denote the Canadian versions.

Features & Benefits

Designed especially for use in the installation of signal system and alarm wiring. Base has 1/2" trade size KOs. Larger gang boxes available by special order. Two-gang: 4 3/4" L x 4 3/4" W (121mm x 121mm). Accepts NEMA double-gang standard faceplates. NOTE: Certified to Canadian Safety Standards for sale in Canada. When ordering these products, change the "V" color prefix to "vc" or the "WH" color suffix to "WHC" to denote the Canadian versions.

Specifications

General Info

| | | | |
|-------------------|---------------|------------|--------------|
| Product Line | Wiremold | UPC Number | 786776076714 |
| Country Of Origin | United States | | |

Dimensions

| | | | |
|-------------------|---------|------------------|---------|
| Product Width US | 4.75 in | Product Depth US | 2.25 in |
| Product Length US | 4.75 in | | |

Listing Agencies / 3rd Party Agencies

| | | | |
|---------------------|--------|--------------|-----|
| cULus ListingNumber | E41751 | cULus Listed | Yes |
|---------------------|--------|--------------|-----|

Buy American Act Compliance

| | |
|-------|-----|
| NAFTA | Yes |
|-------|-----|

Additional Information

RoHS Conformant

Yes

Product Environmental Profile

Yes
