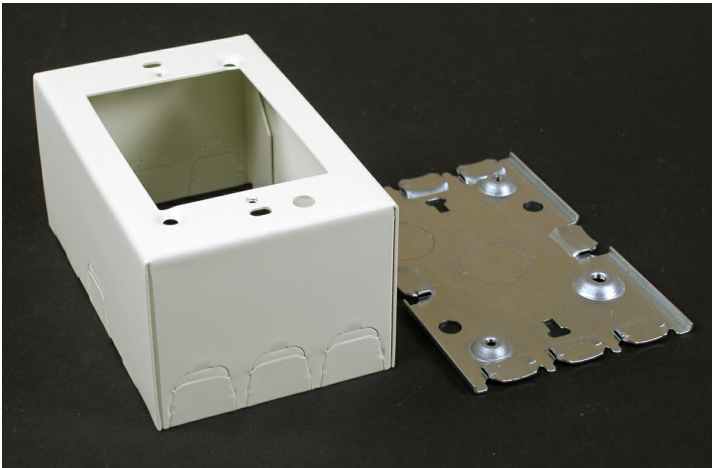




Wiremold
500/700 Single-Gang Extra Deep Switch and Receptacle Box Fitting
Part No. 5744WH



For deep devices such as momentary contact, remote control switches, and hospital signaling system devices. Base has 1/2" trade size KO's. Larger gang boxes available by special order. Single-gang: 4 5/8" L x 2 7/8" W (117mm x 73mm). Accepts NEMA single-gang standard faceplates. NOTE: Certified to Canadian Safety Standards for sale in Canada. When ordering these products, change the "V" color prefix to "vc" or the "WH" color suffix to "WHC" to denote the Canadian versions.

Features & Benefits

For deep devices such as momentary contact, remote control switches, and hospital signaling system devices.

Base has 1/2" trade size KO's. Larger gang boxes available by special order. Single-gang: 4 5/8" L x 2 7/8" W (117mm x 73mm).

Accepts NEMA single-gang standard faceplates. NOTE: Certified to Canadian Safety Standards for sale in Canada. When ordering these products, change the "V" color prefix to "vc" or the "WH" color suffix to "WHC" to denote the Canadian versions.

Specifications

General Info

Product Line	Wiremold	Color	White
UPC Number	786776562910	Country Of Origin	United States
Application Sector	Commercial, Residential	Standard	cULus Listed Raceway: File E4376 Guide RJBT. Fittings: File E4751 Guide RJPR. Meets Article 386 of NEC. Meets Section 12-1600 of CEC.
Type	Raceway		

Dimensions

Product Width US	2.875 in	Product Weight US	0.8 lb
Product Depth US	2.75 in	Product Length US	4.625 in

Additional Information

RoHS Compliant

Yes

Product Environmental Profile Yes

Technical Information

Voltage

600.0 V
